



ELECTRONIC COPY

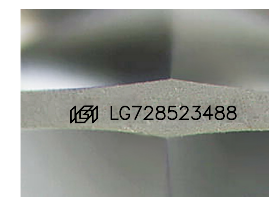
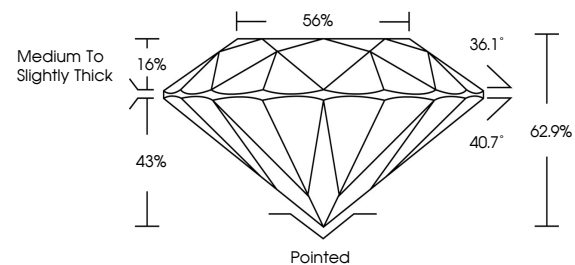
LG728523488
Report verification at igi.org



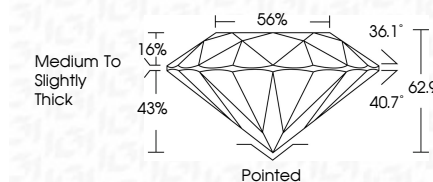
October 8, 2025
IGI Report Number **LG728523488**
Description **LABORATORY GROWN DIAMOND**
Shape and Cutting Style **ROUND BRILLIANT**
Measurements **8.14 - 8.17 X 5.14 MM**
GRADING RESULTS
Carat Weight **2.13 CARATS**
Color Grade **E**
Clarity Grade **VS 1**
Cut Grade **EXCELLENT**

October 8, 2025
IGI Report Number **LG728523488**
Description **LABORATORY GROWN DIAMOND**
Shape and Cutting Style **ROUND BRILLIANT**
Measurements **8.14 - 8.17 X 5.14 MM**
GRADING RESULTS
Carat Weight **2.13 CARATS**
Color Grade **E**
Clarity Grade **VS 1**
Cut Grade **EXCELLENT**

PROPORTIONS



Sample Image Used



ADDITIONAL GRADING INFORMATION
Polish **EXCELLENT**
Symmetry **EXCELLENT**
Fluorescence **NONE**
Inscription(s) **IGI LG728523488**

COLOR

D E F G H I J Faint Very Light Light

CLARITY

| FL | IF | VS ¹⁻² | VS ¹⁻² | SI ¹⁻² | I ¹⁻³ |
|----------|---------------------|-----------------------------|------------------------|-------------------|------------------|
| Flawless | Internally Flawless | Very Very Slightly Included | Very Slightly Included | Slightly Included | Included |

ADDITIONAL GRADING INFORMATION

Polish **EXCELLENT**
Symmetry **EXCELLENT**
Fluorescence **NONE**
Inscription(s) **IGI LG728523488**



IGI



October 8, 2025
IGI Report No **LG728523488**
ROUND BRILLIANT
8.14 - 8.17 X 5.14 MM
Carat Weight **2.13 CARATS**
Color Grade **E**
Clarity Grade **VS 1**
Depth **EXCELLENT**
Table **62.9%**
Girdle **66%**
Medium To Slightly Thick
Culet **Pointed**
Polish **EXCELLENT**
Symmetry **EXCELLENT**
Fluorescence **NONE**
Inscriptions(s) **IGI LG728523488**