



**INTERNATIONAL
GEMOLOGICAL
INSTITUTE**

ELECTRONIC COPY

LG728523477
Report verification at igi.org

LABORATORY GROWN DIAMOND REPORT



October 8, 2025

IGI Report Number **LG728523477**

Description	LABORATORY GROWN DIAMOND
-------------	--------------------------

Shape and Cutting Style **ROUND BRILLIANT**

Measurements	8.17 - 8.26 X 5.14 MM
--------------	-----------------------

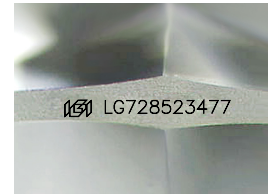
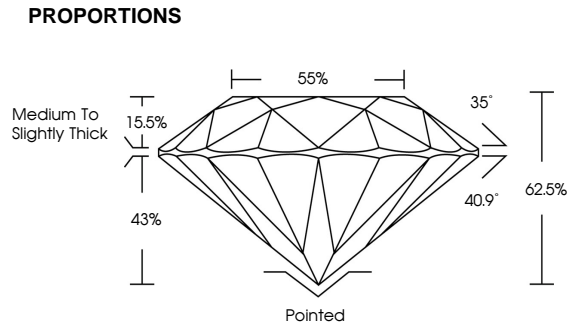
GRADING RESULTS

Carat Weight **2.13 CARATS**

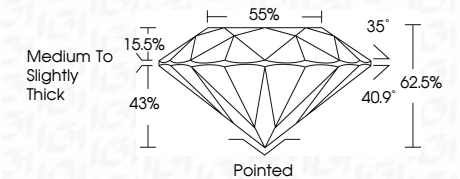
Color Grade	E
-------------	---

Clarity Grade VS 2

Cut Grade **IDEAL**



Sample Image Used



COLOR

D E F G H I J Faint Very Light Light

CLARITY

FL IF VWS¹⁻² VS¹⁻² SI¹⁻² I¹⁻³

Flawless	Internally Flawless	Very Slightly Included	Very Slightly Included	Slightly Included	Included
----------	---------------------	------------------------	------------------------	-------------------	----------



© IGI 2020, International Gemmological Institute

FD - 10 20



THIS DOCUMENT WAS PRODUCED WITH THE FOLLOWING SECURITY MEASURES: SPECIAL DOCUMENT PAPER, INK SCREENS, WATERMARK, BACKGROUND DESIGNS, HOLOGRAM AND OTHER SECURITY FEATURES NOT LISTED AND DO EXCEED DOCUMENT SECURITY INDUSTRY GUIDELINES



IGI

October 8, 2025
IGI Report No LG728523477
ROUND BRILLIANT

8.17 - 8.26 X 5.14 MM
2.13 CARATS

8.17 - 8.26 X 5.14 MM	2.13 CARATS
Carat Weight	
Color Grade	E

Color Grade	VS 2	IDEAL
Clarity Grade		
Cut Grade		

Cut Grade	IDEAL
Depth	62.5%
Table	55%

Circle ☐ Medium To Slightly Thick ☐ 30%

	Culet	Pointed
Polish	EXCELLENT	

Symmetry	EXCELLENT
Fluorescence	NONE

Inscription(s)	Object Number
	1991 LG728523477