



ELECTRONIC COPY

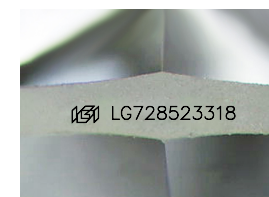
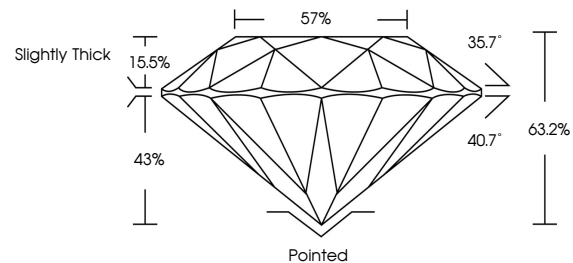
LG728523318
Report verification at igi.org



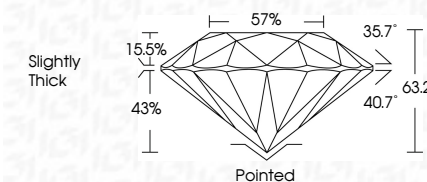
October 8, 2025
IGI Report Number **LG728523318**
Description **LABORATORY GROWN DIAMOND**
Shape and Cutting Style **ROUND BRILLIANT**
Measurements **8.11 - 8.14 X 5.14 MM**
GRADING RESULTS
Carat Weight **2.13 CARATS**
Color Grade **E**
Clarity Grade **VVS 2**
Cut Grade **EXCELLENT**

October 8, 2025
IGI Report Number **LG728523318**
Description **LABORATORY GROWN DIAMOND**
Shape and Cutting Style **ROUND BRILLIANT**
Measurements **8.11 - 8.14 X 5.14 MM**
GRADING RESULTS
Carat Weight **2.13 CARATS**
Color Grade **E**
Clarity Grade **VVS 2**
Cut Grade **EXCELLENT**

PROPORTIONS



Sample Image Used



ADDITIONAL GRADING INFORMATION
Polish **EXCELLENT**
Symmetry **EXCELLENT**
Fluorescence **NONE**
Inscription(s) **IGI LG728523318**

ADDITIONAL GRADING INFORMATION
Polish **EXCELLENT**
Symmetry **EXCELLENT**
Fluorescence **NONE**
Inscription(s) **IGI LG728523318**

COLOR

D E F G H I J Faint Very Light Light

CLARITY

| FL | IF | VVS ¹⁻² | VS ¹⁻² | SI ¹⁻² | I ¹⁻³ |
|----------|---------------------|-----------------------------|------------------------|-------------------|------------------|
| Flawless | Internally Flawless | Very Very Slightly Included | Very Slightly Included | Slightly Included | Included |



IGI



October 8, 2025
IGI Report No LG728523318
ROUND BRILLIANT
8.11 - 8.14 X 5.14 MM
2.13 CARATS
E
VVS 2
EXCELLENT
63.2%
57%
Slightly Thick
Pointed
EXCELLENT
EXCELLENT
NONE
IGI LG728523318