



**ELECTRONIC COPY**

LG728522128  
Report verification at [igi.org](http://igi.org)

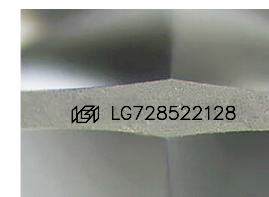
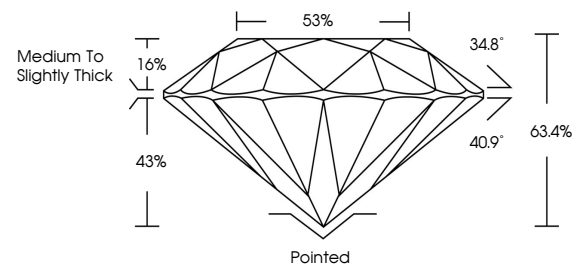


September 30, 2025  
IGI Report Number **LG728522128**  
Description **LABORATORY GROWN DIAMOND**  
Shape and Cutting Style **ROUND BRILLIANT**  
Measurements **7.63 - 7.72 X 4.87 MM**  
**GRADING RESULTS**  
Carat Weight **1.77 CARAT**  
Color Grade **E**  
Clarity Grade **VVS 2**  
Cut Grade **EXCELLENT**

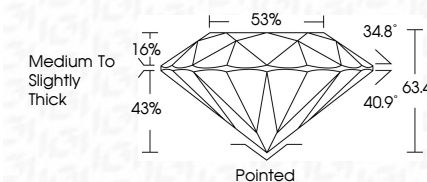
September 30, 2025  
IGI Report Number **LG728522128**  
Description **LABORATORY GROWN DIAMOND**  
Shape and Cutting Style **ROUND BRILLIANT**  
Measurements **7.63 - 7.72 X 4.87 MM**  
**GRADING RESULTS**  
Carat Weight **1.77 CARAT**  
Color Grade **E**  
Clarity Grade **VVS 2**  
Cut Grade **EXCELLENT**

**ADDITIONAL GRADING INFORMATION**  
Polish **VERY GOOD**  
Symmetry **EXCELLENT**  
Fluorescence **NONE**  
Inscription(s) **IGI LG728522128**

**PROPORTIONS**



Sample Image Used



**COLOR**

D E F G H I J Faint Very Light Light

**CLARITY**

IF	VS <sup>1-2</sup>	VS <sup>1-2</sup>	SI <sup>1-2</sup>	I <sup>1-3</sup>
Internally Flawless	Very Very Slightly Included	Very Slightly Included	Slightly Included	Included

**ADDITIONAL GRADING INFORMATION**

Polish **VERY GOOD**  
Symmetry **EXCELLENT**  
Fluorescence **NONE**  
Inscription(s) **IGI LG728522128**



**IGI**

September 30, 2025  
IGI Report No LG728522128  
**ROUND BRILLIANT**  
7.63 - 7.72 X 4.87 MM  
1.77 CARAT  
E  
VVS 2  
EXCELLENT  
63.4%  
59.9%  
Medium To Slightly Thick  
Pointed  
VERY GOOD  
EXCELLENT  
NONE  
IGI LG728522128