



ELECTRONIC COPY

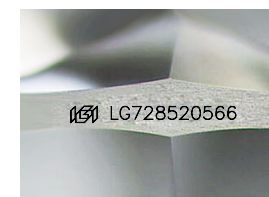
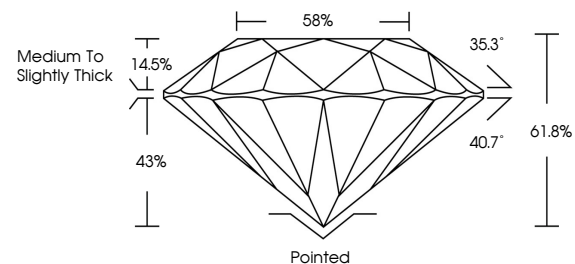
LG728520566
Report verification at igi.org



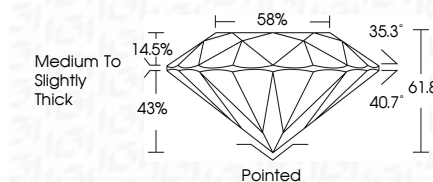
September 19, 2025
IGI Report Number **LG728520566**
Description **LABORATORY GROWN DIAMOND**
Shape and Cutting Style **ROUND BRILLIANT**
Measurements **5.76 - 5.80 X 3.58 MM**
GRADING RESULTS
Carat Weight **0.74 CARAT**
Color Grade **D**
Clarity Grade **SI 1**
Cut Grade **IDEAL**

September 19, 2025
IGI Report Number **LG728520566**
Description **LABORATORY GROWN DIAMOND**
Shape and Cutting Style **ROUND BRILLIANT**
Measurements **5.76 - 5.80 X 3.58 MM**
GRADING RESULTS
Carat Weight **0.74 CARAT**
Color Grade **D**
Clarity Grade **SI 1**
Cut Grade **IDEAL**

PROPORTIONS



Sample Image Used



ADDITIONAL GRADING INFORMATION
Polish **EXCELLENT**
Symmetry **EXCELLENT**
Fluorescence **NONE**
Inscription(s) **IGI LG728520566**

COLOR

D E F G H I J Faint Very Light Light

CLARITY

IF	VS ¹⁻²	VS ¹⁻²	SI ¹⁻²	I ¹⁻³
Internally Flawless	Very Very Slightly Included	Very Slightly Included	Slightly Included	Included

ADDITIONAL GRADING INFORMATION

Polish **EXCELLENT**
Symmetry **EXCELLENT**
Fluorescence **NONE**
Inscription(s) **IGI LG728520566**



IGI



September 19, 2025
IGI Report No LG728520566
ROUND BRILLIANT
5.76 - 5.80 X 3.58 MM
0.74 CARAT
D
SI 1
IDEAL
61.8%
88%
Medium To Slightly Thick
Pointed
EXCELLENT
EXCELLENT
NONE
IGI LG728520566