



ELECTRONIC COPY

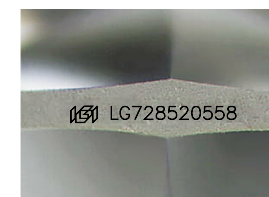
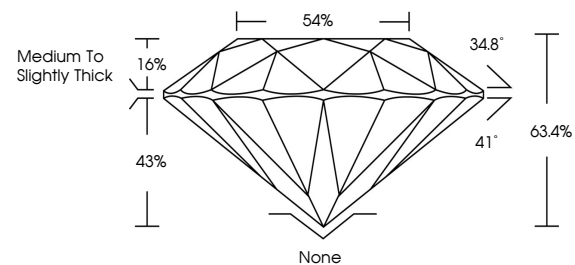
LG728520558
Report verification at igi.org



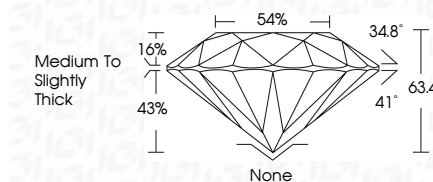
September 19, 2025
IGI Report Number **LG728520558**
Description **LABORATORY GROWN DIAMOND**
Shape and Cutting Style **ROUND BRILLIANT**
Measurements **6.23 - 6.25 X 3.96 MM**
GRADING RESULTS
Carat Weight **0.95 CARAT**
Color Grade **D**
Clarity Grade **VS 2**
Cut Grade **EXCELLENT**

September 19, 2025
IGI Report Number **LG728520558**
Description **LABORATORY GROWN DIAMOND**
Shape and Cutting Style **ROUND BRILLIANT**
Measurements **6.23 - 6.25 X 3.96 MM**
GRADING RESULTS
Carat Weight **0.95 CARAT**
Color Grade **D**
Clarity Grade **VS 2**
Cut Grade **EXCELLENT**

PROPORTIONS



Sample Image Used



ADDITIONAL GRADING INFORMATION
Polish **EXCELLENT**
Symmetry **EXCELLENT**
Fluorescence **NONE**
Inscription(s) **IGI LG728520558**

COLOR

D E F G H I J Faint Very Light Light

CLARITY

IF	VS ¹⁻²	VS ¹⁻²	SI ¹⁻²	I ¹⁻³
Internally Flawless	Very Very Slightly Included	Very Slightly Included	Slightly Included	Included

ADDITIONAL GRADING INFORMATION

Polish **EXCELLENT**
Symmetry **EXCELLENT**
Fluorescence **NONE**
Inscription(s) **IGI LG728520558**



IGI



September 19, 2025
IGI Report No LG728520558
ROUND BRILLIANT
6.23 - 6.25 X 3.96 MM
0.95 CARAT
D
VS 2
EXCELLENT
63.4%
54%
Medium To Slightly Thick
None
EXCELLENT
EXCELLENT
NONE
IGI LG728520558