



**ELECTRONIC COPY**

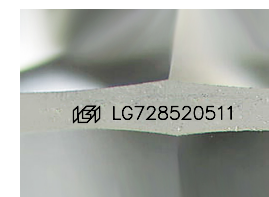
LG728520511  
Report verification at [igi.org](http://igi.org)



September 19, 2025  
IGI Report Number **LG728520511**  
Description **LABORATORY GROWN DIAMOND**  
Shape and Cutting Style **ROUND BRILLIANT**  
Measurements **6.29 - 6.30 X 3.93 MM**

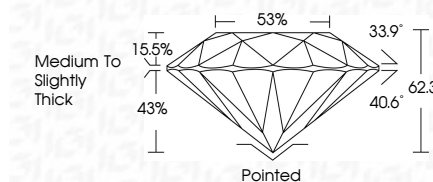
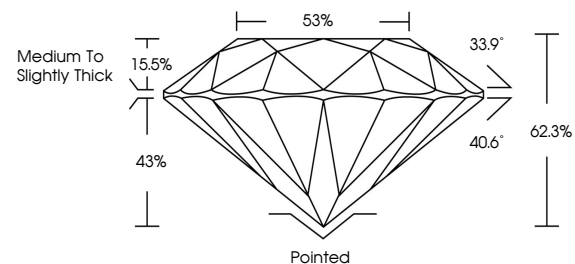
**GRADING RESULTS**

Carat Weight **0.95 CARAT**  
Color Grade **D**  
Clarity Grade **VVS 2**  
Cut Grade **IDEAL**



Sample Image Used

**PROPORTIONS**



September 19, 2025  
IGI Report Number **LG728520511**  
Description **LABORATORY GROWN DIAMOND**  
Shape and Cutting Style **ROUND BRILLIANT**  
Measurements **6.29 - 6.30 X 3.93 MM**  
**GRADING RESULTS**  
Carat Weight **0.95 CARAT**  
Color Grade **D**  
Clarity Grade **VVS 2**  
Cut Grade **IDEAL**

**ADDITIONAL GRADING INFORMATION**

Polish **EXCELLENT**  
Symmetry **EXCELLENT**  
Fluorescence **NONE**  
Inscription(s) **IGI LG728520511**

**COLOR**

D E F G H I J Faint Very Light Light

**CLARITY**

IF	WS <sup>1-2</sup>	VS <sup>1-2</sup>	SI <sup>1-2</sup>	I <sup>1-3</sup>
Internally Flawless	Very Very Slightly Included	Very Slightly Included	Slightly Included	Included

**ADDITIONAL GRADING INFORMATION**

Polish **EXCELLENT**  
Symmetry **EXCELLENT**  
Fluorescence **NONE**  
Inscription(s) **IGI LG728520511**



**IGI**



September 19, 2025  
IGI Report No LG728520511  
**ROUND BRILLIANT**  
6.29 - 6.30 X 3.93 MM  
0.95 CARAT  
D  
VVS 2  
IDEAL  
62.3%  
88%  
Medium To Slightly Thick  
Pointed  
EXCELLENT  
EXCELLENT  
NONE  
IGI LG728520511