



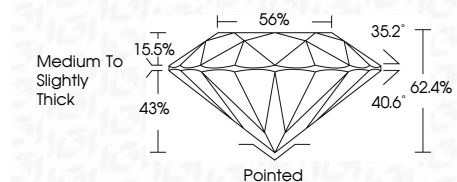
ELECTRONIC COPY

LG728520498
Report verification at igi.org



September 19, 2025
IGI Report Number **LG728520498**
Description **LABORATORY GROWN DIAMOND**
Shape and Cutting Style **ROUND BRILLIANT**
Measurements **6.51 - 6.52 X 4.07 MM**

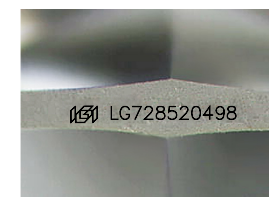
GRADING RESULTS
Carat Weight **1.07 CARAT**
Color Grade **F**
Clarity Grade **VS 2**
Cut Grade **IDEAL**



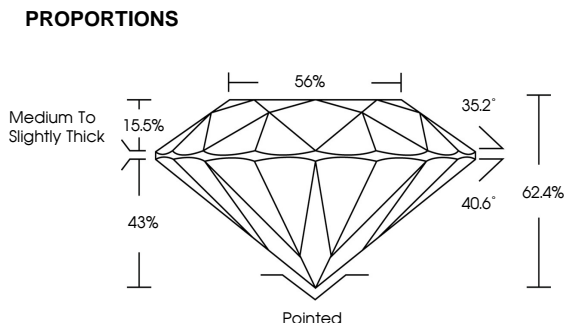
ADDITIONAL GRADING INFORMATION
Polish **EXCELLENT**
Symmetry **EXCELLENT**
Fluorescence **NONE**
Inscription(s) **(IGI) LG728520498**



September 19, 2025
IGI Report No LG728520498
ROUND BRILLIANT
6.51 - 6.52 X 4.07 MM
1.07 CARAT
F
VS 2
IDEAL
62.4%
56%
Medium To Slightly Thick
Pointed
EXCELLENT
EXCELLENT
NONE
IGI LG728520498



Sample Image Used



COLOR
D E F G H I J Faint Very Light Light

CLARITY
IF WS¹⁻² VS¹⁻² SI¹⁻² I¹⁻³
Internally Flawless Very Very Slightly Included Very Slightly Included Slightly Included Included

