



ELECTRONIC COPY

LG728520233
Report verification at igi.org



September 19, 2025

IGI Report Number **LG728520233**

Description **LABORATORY GROWN DIAMOND**

Shape and Cutting Style **ROUND BRILLIANT**

Measurements **6.62 - 6.63 X 4.17 MM**

GRADING RESULTS

Carat Weight **1.13 CARAT**

Color Grade **D**

Clarity Grade **VS 1**

Cut Grade **EXCELLENT**

September 19, 2025

IGI Report Number **LG728520233**

Description **LABORATORY GROWN DIAMOND**

Shape and Cutting Style **ROUND BRILLIANT**

Measurements **6.62 - 6.63 X 4.17 MM**

GRADING RESULTS

Carat Weight **1.13 CARAT**

Color Grade **D**

Clarity Grade **VS 1**

Cut Grade **EXCELLENT**

ADDITIONAL GRADING INFORMATION

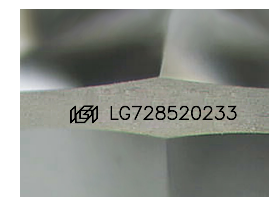
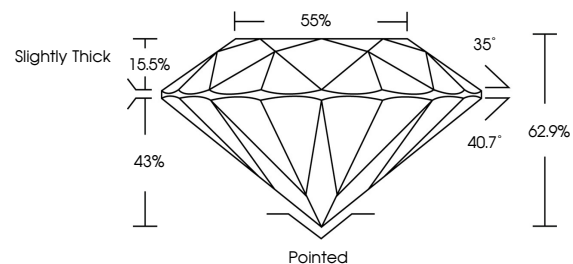
Polish **EXCELLENT**

Symmetry **EXCELLENT**

Fluorescence **NONE**

Inscription(s) **IGI LG728520233**

PROPORTIONS



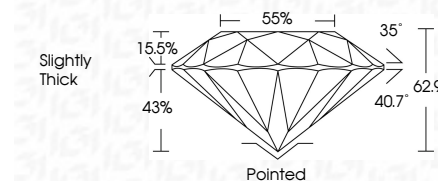
Sample Image Used

COLOR

D E F G H I J Faint Very Light Light

CLARITY

IF	VS ¹⁻²	VS ¹⁻²	SI ¹⁻²	I ¹⁻³
Internally Flawless	Very Very Slightly Included	Very Slightly Included	Slightly Included	Included



ADDITIONAL GRADING INFORMATION

Polish **EXCELLENT**

Symmetry **EXCELLENT**

Fluorescence **NONE**

Inscription(s) **IGI LG728520233**



IGI



September 19, 2025	1.13 CARAT	D	VS 1	62.9%	85%	Slightly Thick	Pointed	EXCELLENT	EXCELLENT	NONE	IGI LG728520233
IGI Report No LG728520233	Carat Weight	Color Grade	Clarity Grade	Depth	Table	Girdle	Culet	Polish	Symmetry	Fluorescence	Inscription(s)
ROUND BRILLIANT	6.62 - 6.63 X 4.17 MM	D	VS 1	62.9%	85%	Slightly Thick	Pointed	EXCELLENT	EXCELLENT	NONE	IGI LG728520233