



ELECTRONIC COPY

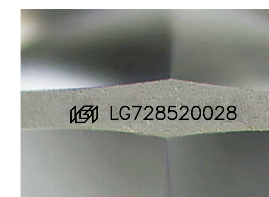
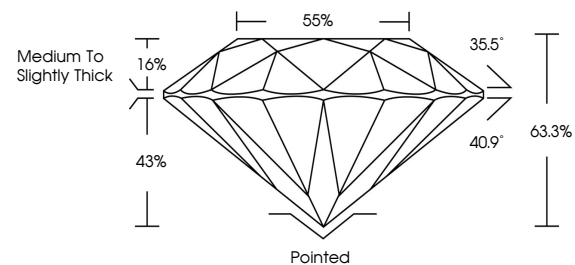
LG728520028
Report verification at igi.org



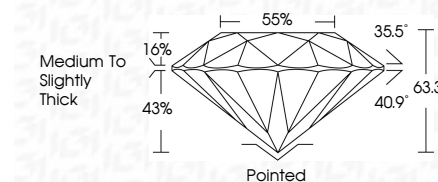
September 11, 2025
IGI Report Number **LG728520028**
Description **LABORATORY GROWN DIAMOND**
Shape and Cutting Style **ROUND BRILLIANT**
Measurements **7.90 - 7.94 X 5.02 MM**
GRADING RESULTS
Carat Weight **1.95 CARAT**
Color Grade **F**
Clarity Grade **VS 1**
Cut Grade **EXCELLENT**

September 11, 2025
IGI Report Number **LG728520028**
Description **LABORATORY GROWN DIAMOND**
Shape and Cutting Style **ROUND BRILLIANT**
Measurements **7.90 - 7.94 X 5.02 MM**
GRADING RESULTS
Carat Weight **1.95 CARAT**
Color Grade **F**
Clarity Grade **VS 1**
Cut Grade **EXCELLENT**

PROPORTIONS



Sample Image Used



ADDITIONAL GRADING INFORMATION
Polish **EXCELLENT**
Symmetry **VERY GOOD**
Fluorescence **NONE**
Inscription(s) **IGI LG728520028**

COLOR

D E F G H I J Faint Very Light Light

CLARITY

IF	VS ¹⁻²	VS ¹⁻²	SI ¹⁻²	I ¹⁻³
Internally Flawless	Very Very Slightly Included	Very Slightly Included	Slightly Included	Included

ADDITIONAL GRADING INFORMATION

Polish **EXCELLENT**
Symmetry **VERY GOOD**
Fluorescence **NONE**
Inscription(s) **IGI LG728520028**



IGI



September 11, 2025
IGI Report No **LG728520028**
ROUND BRILLIANT
Carat Weight **1.95 CARAT**
Color Grade **F**
Clarity Grade **VS 1**
Depth **EXCELLENT**
Table **63.3%**
Girdle **85%**
Medium To Slightly Thick
Culet **Pointed**
Polish **EXCELLENT**
Symmetry **VERY GOOD**
Fluorescence **NONE**
Inscription(s) **IGI LG728520028**