



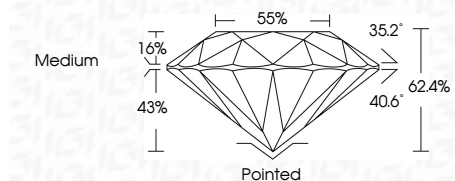
ELECTRONIC COPY

LG728520002
Report verification at igi.org



September 11, 2025
IGI Report Number **LG728520002**
Description **LABORATORY GROWN DIAMOND**
Shape and Cutting Style **ROUND BRILLIANT**
Measurements **7.69 - 7.71 X 4.81 MM**

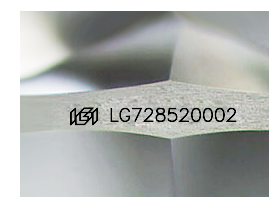
GRADING RESULTS
Carat Weight **1.75 CARAT**
Color Grade **E**
Clarity Grade **VS 1**
Cut Grade **IDEAL**



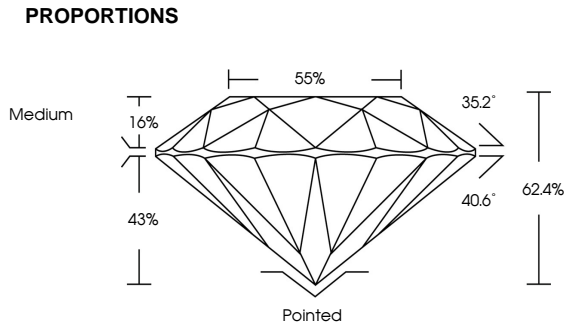
ADDITIONAL GRADING INFORMATION
Polish **EXCELLENT**
Symmetry **EXCELLENT**
Fluorescence **NONE**
Inscription(s) **(IGI) LG728520002**



September 11, 2025
IGI Report No LG728520002
ROUND BRILLIANT
7.69 - 7.71 X 4.81 MM
1.75 CARAT
E
VS 1
IDEAL
62.4%
85%
Medium
Pointed
EXCELLENT
EXCELLENT
NONE
NONE
(IGI) LG728520002



Sample Image Used



COLOR
D E F G H I J Faint Very Light Light

CLARITY
IF WS¹⁻² VS¹⁻² SI¹⁻² I¹⁻³
Internally Flawless Very Very Slightly Included Very Slightly Included Slightly Included Included



September 11, 2025
IGI Report Number **LG728520002**
Description **LABORATORY GROWN DIAMOND**
Shape and Cutting Style **ROUND BRILLIANT**
Measurements **7.69 - 7.71 X 4.81 MM**
GRADING RESULTS
Carat Weight **1.75 CARAT**
Color Grade **E**
Clarity Grade **VS 1**
Cut Grade **IDEAL**
ADDITIONAL GRADING INFORMATION
Polish **EXCELLENT**
Symmetry **EXCELLENT**
Fluorescence **NONE**
Inscription(s) **(IGI) LG728520002**