



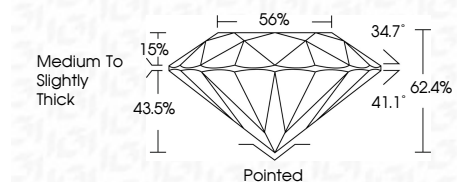
ELECTRONIC COPY

LG728519986
Report verification at igi.org



September 11, 2025
IGI Report Number **LG728519986**
Description **LABORATORY GROWN DIAMOND**
Shape and Cutting Style **ROUND BRILLIANT**
Measurements **7.99 - 8.00 X 5.00 MM**

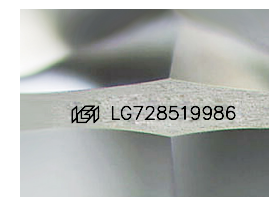
GRADING RESULTS
Carat Weight **1.98 CARAT**
Color Grade **E**
Clarity Grade **VS 1**
Cut Grade **IDEAL**



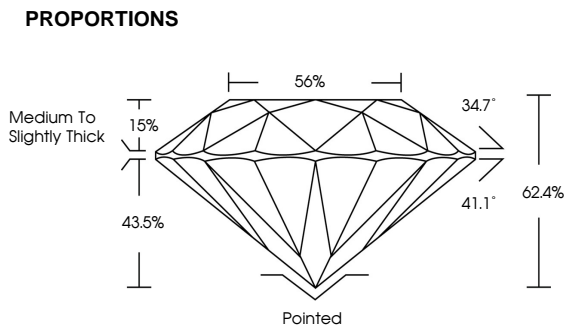
ADDITIONAL GRADING INFORMATION
Polish **EXCELLENT**
Symmetry **EXCELLENT**
Fluorescence **NONE**
Inscription(s) **IGI LG728519986**



September 11, 2025
IGI Report No LG728519986
ROUND BRILLIANT
7.99 - 8.00 X 5.00 MM
1.98 CARAT
E
VS 1
IDEAL
62.4%
56%
Medium To Slightly Thick
Pointed
EXCELLENT
EXCELLENT
NONE
IGI LG728519986



Sample Image Used



COLOR
D E F G H I J Faint Very Light Light

CLARITY
IF WS¹⁻² VS¹⁻² SI¹⁻² I¹⁻³
Internally Flawless Very Very Slightly Included Very Slightly Included Slightly Included Included

