



ELECTRONIC COPY

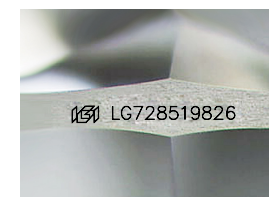
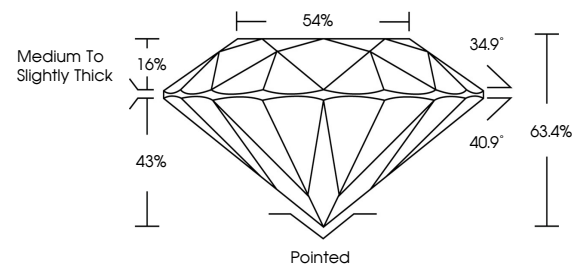
LG728519826
Report verification at igi.org



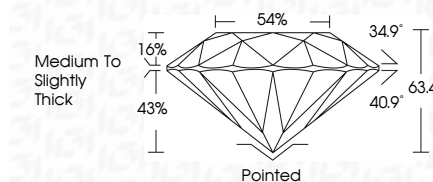
September 11, 2025
IGI Report Number **LG728519826**
Description **LABORATORY GROWN DIAMOND**
Shape and Cutting Style **ROUND BRILLIANT**
Measurements **8.01 - 8.02 X 5.09 MM**
GRADING RESULTS
Carat Weight **2.03 CARATS**
Color Grade **G**
Clarity Grade **VS 1**
Cut Grade **EXCELLENT**

September 11, 2025
IGI Report Number **LG728519826**
Description **LABORATORY GROWN DIAMOND**
Shape and Cutting Style **ROUND BRILLIANT**
Measurements **8.01 - 8.02 X 5.09 MM**
GRADING RESULTS
Carat Weight **2.03 CARATS**
Color Grade **G**
Clarity Grade **VS 1**
Cut Grade **EXCELLENT**

PROPORTIONS



Sample Image Used



ADDITIONAL GRADING INFORMATION
Polish **EXCELLENT**
Symmetry **EXCELLENT**
Fluorescence **NONE**
Inscription(s) **IGI LG728519826**

ADDITIONAL GRADING INFORMATION
Polish **EXCELLENT**
Symmetry **EXCELLENT**
Fluorescence **NONE**
Inscription(s) **IGI LG728519826**

COLOR

D E F G H I J Faint Very Light Light

CLARITY

IF	VS ¹⁻²	VS ¹⁻²	SI ¹⁻²	I ¹⁻³
Internally Flawless	Very Very Slightly Included	Very Slightly Included	Slightly Included	Included



IGI



September 11, 2025
IGI Report No LG728519826
ROUND BRILLIANT
Carat Weight **2.03 CARATS**
Color Grade **G**
Clarity Grade **VS 1**
Depth **EXCELLENT**
Table **63.4%**
Girdle **54%**
Medium To Slightly Thick
Culet **Pointed**
Polish **EXCELLENT**
Symmetry **EXCELLENT**
Fluorescence **NONE**
Inscription(s) **IGI LG728519826**