



ELECTRONIC COPY

LG728519816
Report verification at igi.org



September 11, 2025

IGI Report Number **LG728519816**

Description **LABORATORY GROWN DIAMOND**

Shape and Cutting Style **ROUND BRILLIANT**

Measurements **8.10 - 8.11 X 5.11 MM**

GRADING RESULTS

Carat Weight **2.04 CARATS**

Color Grade **F**

Clarity Grade **VS 2**

Cut Grade **EXCELLENT**

September 11, 2025

IGI Report Number **LG728519816**

Description **LABORATORY GROWN DIAMOND**

Shape and Cutting Style **ROUND BRILLIANT**

Measurements **8.10 - 8.11 X 5.11 MM**

GRADING RESULTS

Carat Weight **2.04 CARATS**

Color Grade **F**

Clarity Grade **VS 2**

Cut Grade **EXCELLENT**

ADDITIONAL GRADING INFORMATION

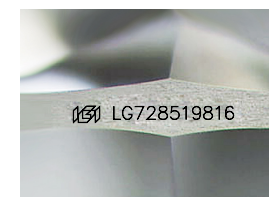
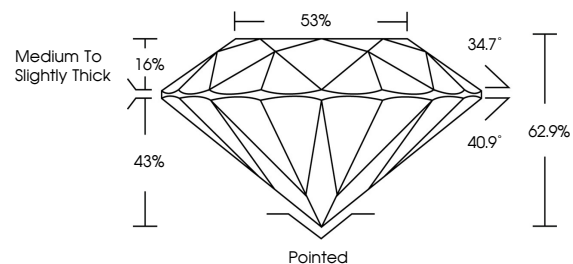
Polish **EXCELLENT**

Symmetry **EXCELLENT**

Fluorescence **NONE**

Inscription(s) **IGI LG728519816**

PROPORTIONS



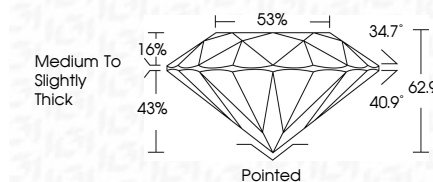
Sample Image Used

COLOR

D E F G H I J Faint Very Light Light

CLARITY

IF	WS ¹⁻²	VS ¹⁻²	SI ¹⁻²	I ¹⁻³
Internally Flawless	Very Very Slightly Included	Very Slightly Included	Slightly Included	Included



ADDITIONAL GRADING INFORMATION

Polish **EXCELLENT**

Symmetry **EXCELLENT**

Fluorescence **NONE**

Inscription(s) **IGI LG728519816**



IGI



September 11, 2025
IGI Report No LG728519816
ROUND BRILLIANT
8.10 - 8.11 X 5.11 MM
Carat Weight **2.04 CARATS**
Color Grade **F**
Clarity Grade **VS 2**
Depth **EXCELLENT**
Table **62.9%**
Girdle **88%**
Medium To Slightly Thick
Culet **Pointed**
Polish **EXCELLENT**
Symmetry **EXCELLENT**
Fluorescence **NONE**
Inscription(s) **IGI LG728519816**