



ELECTRONIC COPY

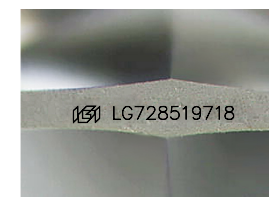
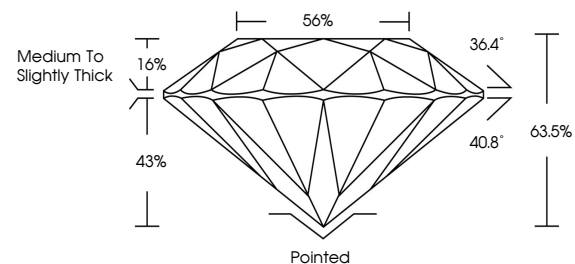
LG728519718
Report verification at igi.org



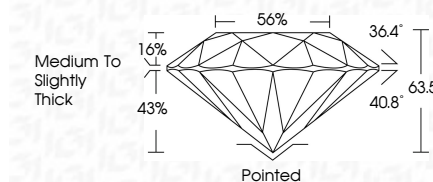
September 11, 2025
IGI Report Number **LG728519718**
Description **LABORATORY GROWN DIAMOND**
Shape and Cutting Style **ROUND BRILLIANT**
Measurements **7.87 - 8.01 X 5.05 MM**
GRADING RESULTS
Carat Weight **2.00 CARATS**
Color Grade **F**
Clarity Grade **VS 1**
Cut Grade **EXCELLENT**

September 11, 2025
IGI Report Number **LG728519718**
Description **LABORATORY GROWN DIAMOND**
Shape and Cutting Style **ROUND BRILLIANT**
Measurements **7.87 - 8.01 X 5.05 MM**
GRADING RESULTS
Carat Weight **2.00 CARATS**
Color Grade **F**
Clarity Grade **VS 1**
Cut Grade **EXCELLENT**

PROPORTIONS



Sample Image Used



ADDITIONAL GRADING INFORMATION
Polish **EXCELLENT**
Symmetry **EXCELLENT**
Fluorescence **NONE**
Inscription(s) **IGI LG728519718**

COLOR

D E F G H I J Faint Very Light Light

CLARITY

IF	VS ¹⁻²	VS ¹⁻²	SI ¹⁻²	I ¹⁻³
Internally Flawless	Very Very Slightly Included	Very Slightly Included	Slightly Included	Included

ADDITIONAL GRADING INFORMATION

Polish **EXCELLENT**
Symmetry **EXCELLENT**
Fluorescence **NONE**
Inscription(s) **IGI LG728519718**



IGI



September 11, 2025
IGI Report No LG728519718
ROUND BRILLIANT
7.87 - 8.01 X 5.05 MM
2.00 CARATS
F
EXCELLENT
VS 1
63.5%
56%
Medium To Slightly Thick
Pointed
EXCELLENT
EXCELLENT
NONE
IGI LG728519718