



ELECTRONIC COPY

LG728519179
Report verification at igi.org



September 11, 2025
IGI Report Number **LG728519179**
Description **LABORATORY GROWN DIAMOND**
Shape and Cutting Style **ROUND BRILLIANT**
Measurements **8.18 - 8.21 X 5.17 MM**

GRADING RESULTS

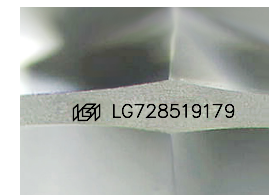
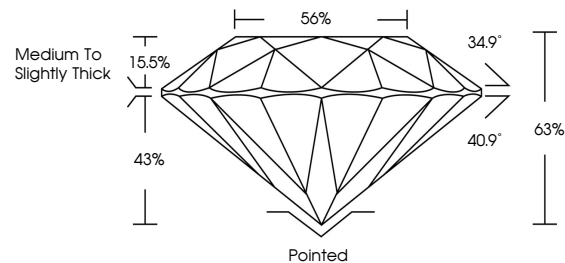
Carat Weight **2.16 CARATS**
Color Grade **D**
Clarity Grade **VS 1**
Cut Grade **EXCELLENT**

September 11, 2025
IGI Report Number **LG728519179**
Description **LABORATORY GROWN DIAMOND**
Shape and Cutting Style **ROUND BRILLIANT**
Measurements **8.18 - 8.21 X 5.17 MM**
GRADING RESULTS
Carat Weight **2.16 CARATS**
Color Grade **D**
Clarity Grade **VS 1**
Cut Grade **EXCELLENT**

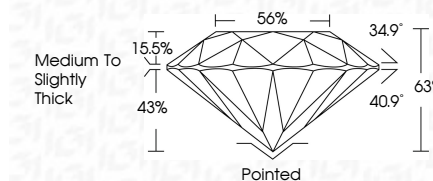
ADDITIONAL GRADING INFORMATION

Polish **EXCELLENT**
Symmetry **EXCELLENT**
Fluorescence **NONE**
Inscription(s) **LG728519179**

PROPORTIONS



Sample Image Used



COLOR

D E F G H I J Faint Very Light Light

CLARITY

IF	VS ¹⁻²	VS ¹⁻²	SI ¹⁻²	I ¹⁻³
Internally Flawless	Very Very Slightly Included	Very Slightly Included	Slightly Included	Included

ADDITIONAL GRADING INFORMATION

Polish **EXCELLENT**
Symmetry **EXCELLENT**
Fluorescence **NONE**
Inscription(s) **LG728519179**



IGI



September 11, 2025	2.16 CARATS	D	VS 1	EXCELLENT	63%	65%	Medium To Slightly Thick	Pointed	EXCELLENT	EXCELLENT	NONE	LG728519179			
IGI Report No LG728519179	8.18 - 8.21 X 5.17 MM	LABORATORY GROWN DIAMOND	ROUND BRILLIANT	2.16 CARATS	D	VS 1	EXCELLENT	63%	65%	Medium To Slightly Thick	Pointed	EXCELLENT	EXCELLENT	NONE	LG728519179
IGI Report No LG728519179	8.18 - 8.21 X 5.17 MM	LABORATORY GROWN DIAMOND	ROUND BRILLIANT	2.16 CARATS	D	VS 1	EXCELLENT	63%	65%	Medium To Slightly Thick	Pointed	EXCELLENT	EXCELLENT	NONE	LG728519179