

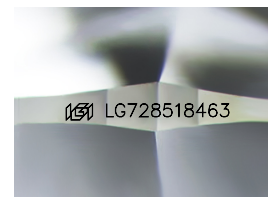
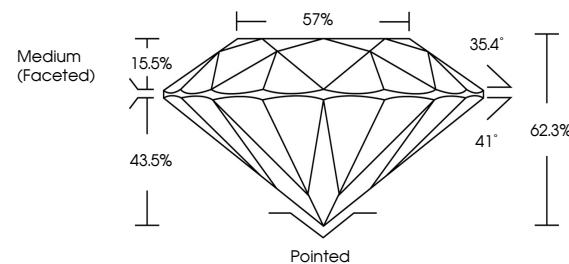


ELECTRONIC COPY

LABORATORY GROWN DIAMOND REPORT

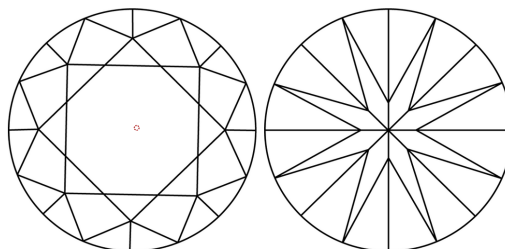
LG728518463
Report verification at igi.org

PROPORTIONS



Sample Image Used

CLARITY CHARACTERISTICS



KEY TO SYMBOLS

Red symbols indicate internal characteristics.
Green symbols indicate external characteristics.

COLOR

D E F G H I J Faint Very Light Light

CLARITY

IF WS¹⁻² VS¹⁻² SI¹⁻² I¹⁻³

Internally Flawless	Very Very Slightly Included	Very Slightly Included	Slightly Included	Included
------------------------	--------------------------------	---------------------------	----------------------	----------

LABORATORY GROWN DIAMOND REPORT



August 16, 2025

IGI Report Number **LG728518463**

Description **LABORATORY GROWN DIAMOND**Shape and Cutting Style **ROUND BRILLIANT**

Measurements 6.43 - 6.46 X 4.01 MM

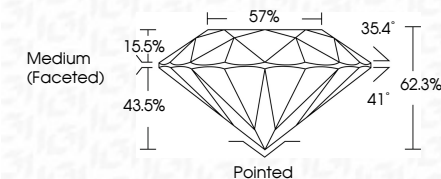
GRADING RESULTS

Carat Weight 1.02 CARAT

Color Grade D

Clarity Grade **VVS 1**

Cut Grade **IDEAL**



ADDITIONAL GRADING INFORMATION

Polish **EXCELLENT**Symmetry **EXCELLENT**Fluorescence **NONE**Inscription(s) LG728518463

Comments: As Grown - No indication of post-growth treatment.

This Laboratory Grown Diamond was created by High Pressure High Temperature (HPHT) growth process.
Type II



© IGI 2020, International Gemological Institute

FD - 10 20



THIS DOCUMENT WAS PRODUCED WITH THE FOLLOWING SECURITY MEASURES: SPECIAL DOCUMENT PAPER, INK SCREENS, WATERMARK, BACKGROUND DESIGNS, HOLOGRAM AND OTHER SECURITY FEATURES NOT LISTED AND DO EXCEED DOCUMENT SECURITY INDUSTRY GUIDELINES

www.igi.org

August 16, 2025	1.02 CARAT	
GI Report No L6728518463		
ROUND BRILLIANT		
4.43 - 4.45 X 4.01 MM		
Carat Weight	VVS 1	
Color Grade	IDEAL	
Clarity Grade	62-83	
Cut Grade	57%	
Depth		
Table		
Grinde	Medium (Faceted)	
Culet	Pointed	
Polish	EXCELLENT	
Symmetry	EXCELLENT	
Fluorescence	NONE	
Inscriptions(s)	6891 L6728518463	
Comments:		
As Grown - No indication of post-growth treatment.		
The Lucky Star Grown Diamond was cut by a highly skilled, high-pressure, high-temperature (HPHT) growth process.		