

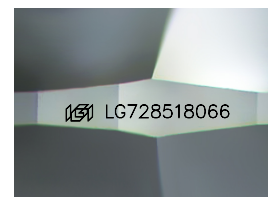
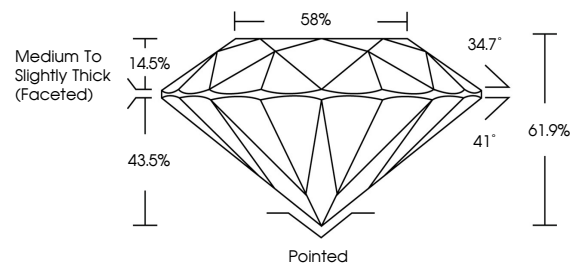


ELECTRONIC COPY

LABORATORY GROWN DIAMOND REPORT

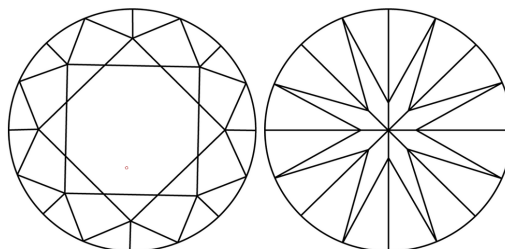
LG728518066
Report verification at igi.org

PROPORTIONS



Sample Image Used

CLARITY CHARACTERISTICS



KEY TO SYMBOLS

Red symbols indicate internal characteristics.
Green symbols indicate external characteristics.

COLOR

D E F G H I J Faint Very Light Light

CLARITY

IF WS¹⁻² VS¹⁻² SI¹⁻² |¹⁻³

Internally Flawless	Very Very Slightly Included	Very Slightly Included	Slightly Included	Included
------------------------	--------------------------------	---------------------------	----------------------	----------



August 12, 2025

IGI Report Number **LG728518066**Description **LABORATORY GROWN DIAMOND**Shape and Cutting Style **ROUND BRILLIANT**

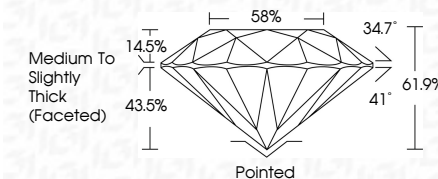
Measurements 8.74 - 8.77 X 5.42 MM

GRADING RESULTS

Carat Weight **2.58 CARATS**

Color Grade **E**Clarity Grade WS 2

Cut Grade **IDEAL**



ADDITIONAL GRADING INFORMATION

Polish **EXCELLENT**Symmetry **EXCELLENT**Fluorescence **NONE**Inscription(s) LG728518066

Comments: This Laboratory Grown Diamond was created by Chemical Vapor Deposition (CVD) growth process.
Type IIa



© IGI 2020, International Gemological Institute

FD - 10 20

www.igi.org



THIS DOCUMENT WAS PRODUCED WITH THE FOLLOWING SECURITY MEASURES: SPECIAL DOCUMENT PAPER, INK SCREENS, WATERMARK BACKGROUND DESIGNS, HOLOGRAM AND OTHER SECURITY FEATURES NOT LISTED AND DO EXCEED DOCUMENT SECURITY INDUSTRY GUIDELINES

August 12, 2025	GI Report No. LG729518066	2.58 CARATS	E	VVS 2	Pointed	Comments: This Laboratory Grown Diamond was created by Chemical Vapor Deposition (CVD) growth process. Type IIa
ROUND BRILLIANT				IDEAL	EXCELLENT	
				61.9%	EXCELLENT	
				Medium to slightly Thick Faceted	NONE	
					lg8 LG729518066	
		Carat Weight	Color Grade	Clarity Grade	Cut Grade	
				Depth		
				Table		
				Grade		
					Culet	
					Pavil	
					Symmetry	
					Fluorescence	
					Inscriptions(s)	