



ELECTRONIC COPY

LG728517166
Report verification at igi.org



August 19, 2025
IGI Report Number **LG728517166**
Description **LABORATORY GROWN DIAMOND**
Shape and Cutting Style **CUSHION MODIFIED BRILLIANT**
Measurements **14.37 X 11.39 X 7.53 MM**
GRADING RESULTS
Carat Weight **11.06 CARATS**
Color Grade **FANCY VIVID PINK**
Clarity Grade **VS 1**

LABORATORY GROWN DIAMOND REPORT

August 19, 2025
IGI Report Number **LG728517166**
Description **LABORATORY GROWN DIAMOND**
Shape and Cutting Style **CUSHION MODIFIED BRILLIANT**
Measurements **14.37 X 11.39 X 7.53 MM**

GRADING RESULTS

Carat Weight **11.06 CARATS**
Color Grade **FANCY VIVID PINK**
Clarity Grade **VS 1**

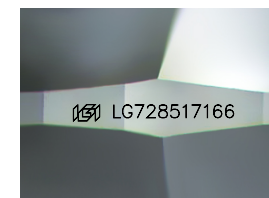
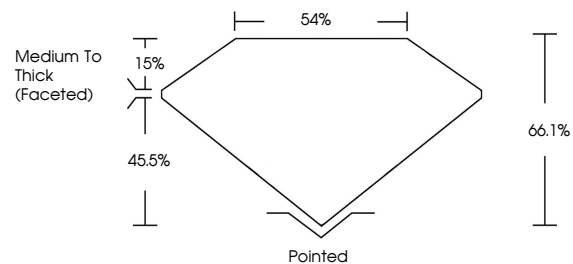
ADDITIONAL GRADING INFORMATION

Polish **VERY GOOD**
Symmetry **EXCELLENT**
Fluorescence **STRONG**
Inscription(s) **IGI LG728517166**

Comments: This Laboratory Grown Diamond was created by Chemical Vapor Deposition (CVD) growth process.
Indications of post-growth treatment.

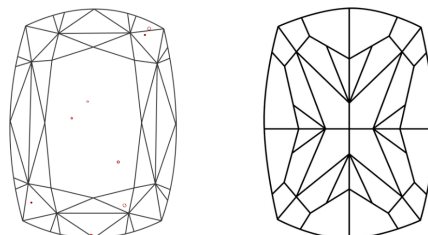
Secondary color: Orange

PROPORTIONS



Sample Image Used

CLARITY CHARACTERISTICS



KEY TO SYMBOLS

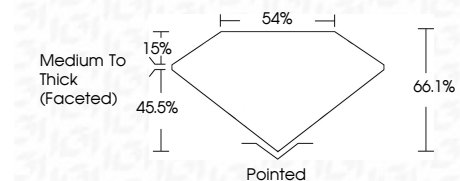
Red symbols indicate internal characteristics.
Green symbols indicate external characteristics.

COLOR

D E F G H I J Faint Very Light Light

CLARITY

IF	VS ¹⁻²	VS ¹⁻²	SI ¹⁻²	I ¹⁻³
Internally Flawless	Very Very Slightly Included	Very Slightly Included	Slightly Included	Included



ADDITIONAL GRADING INFORMATION

Polish **VERY GOOD**
Symmetry **EXCELLENT**
Fluorescence **STRONG**
Inscription(s) **IGI LG728517166**
Comments: This Laboratory Grown Diamond was created by Chemical Vapor Deposition (CVD) growth process.
Indications of post-growth treatment.
Secondary color: Orange



August 19, 2025
IGI Report No LG728517166
CUSHION MODIFIED BRILLIANT
14.37 X 11.39 X 7.53 MM
11.06 CARATS
FANCY VIVID PINK
VS 1
66.1%
45.5%
Medium To Thick (Faceted)
Pointed
Polished
VERY GOOD
EXCELLENT
STRONG
IGI LG728517166
Comments: This Laboratory Grown Diamond was created by Chemical Vapor Deposition (CVD) growth process.
Indications of post-growth treatment.
Secondary color: Orange