



ELECTRONIC COPY

LG728505469
Report verification at igi.org



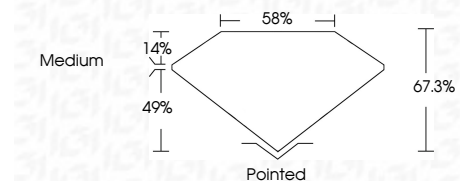
August 19, 2025
IGI Report Number **LG728505469**

Description **LABORATORY GROWN DIAMOND**
Shape and Cutting Style **CUT CORNERED
RECTANGULAR MODIFIED
BRILLIANT**

Measurements **8.14 X 5.57 X 3.75 MM**

GRADING RESULTS

Carat Weight **1.57 CARAT**
Color Grade **FANCY VIVID PINK**
Clarity Grade **VS 1**



ADDITIONAL GRADING INFORMATION

Polish **EXCELLENT**
Symmetry **EXCELLENT**
Fluorescence **STRONG**
Inscription(s) **IGI LG728505469**

Comments: This Laboratory Grown Diamond was created by Chemical Vapor Deposition (CVD) growth process. Indications of post-growth treatment.



August 19, 2025
IGI Report No LG728505469
CUT CORNERED RECT. MODIFIED BRILLIANT
8.14 X 5.57 X 3.75 MM
1.57 CARAT
FANCY VIVID PINK
VS 1
67.3%
85%
Medium
Pointed
EXCELLENT
EXCELLENT
STRONG
IGI LG728505469

Comments: This Laboratory Grown Diamond was created by Chemical Vapor Deposition (CVD) growth process. Indications of post-growth treatment.

LABORATORY GROWN DIAMOND REPORT

August 19, 2025
IGI Report Number **LG728505469**
Description **LABORATORY GROWN DIAMOND**
Shape and Cutting Style **CUT CORNERED RECTANGULAR
MODIFIED BRILLIANT**
Measurements **8.14 X 5.57 X 3.75 MM**

GRADING RESULTS

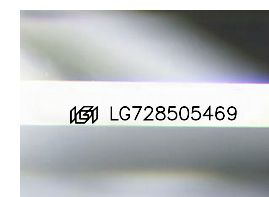
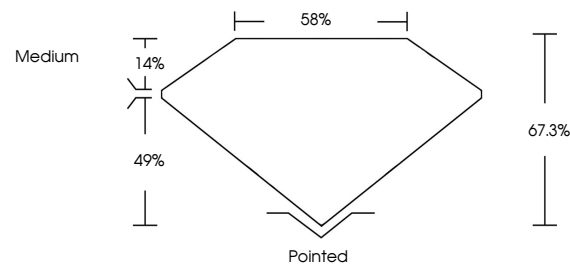
Carat Weight **1.57 CARAT**
Color Grade **FANCY VIVID PINK**
Clarity Grade **VS 1**

ADDITIONAL GRADING INFORMATION

Polish **EXCELLENT**
Symmetry **EXCELLENT**
Fluorescence **STRONG**
Inscription(s) **IGI LG728505469**

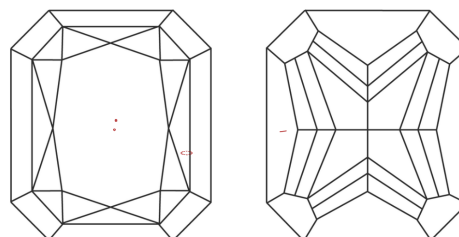
Comments: This Laboratory Grown Diamond was created by Chemical Vapor Deposition (CVD) growth process. Indications of post-growth treatment.

PROPORTIONS



Sample Image Used

CLARITY CHARACTERISTICS



KEY TO SYMBOLS

Red symbols indicate internal characteristics.
Green symbols indicate external characteristics.

COLOR

D E F G H I J Faint Very Light Light

CLARITY

IF	VS ¹⁻²	VS ¹⁻²	SI ¹⁻²	I ¹⁻³
Internally Flawless	Very Very Slightly Included	Very Slightly Included	Slightly Included	Included

