

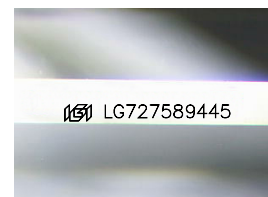
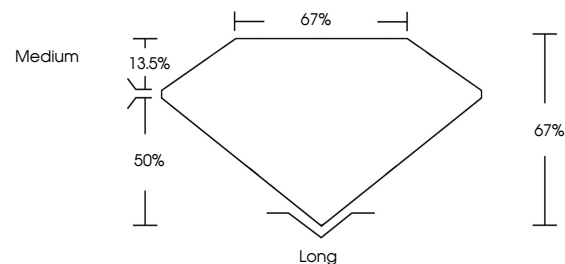


ELECTRONIC COPY

LABORATORY GROWN DIAMOND REPORT

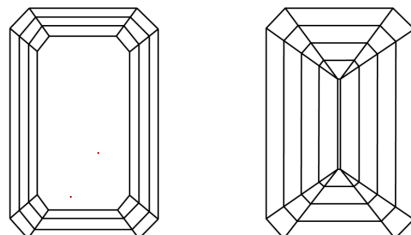
LG727589445
Report verification at igi.org

PROPORTIONS



Sample Image Used

CLARITY CHARACTERISTICS



KEY TO SYMBOLS

Red symbols indicate internal characteristics.
Green symbols indicate external characteristics.

COLOR

D E F G H I J Faint Very Light Light

CLARITY

IF VWS¹⁻² VS¹⁻² SI¹⁻² I¹⁻³

Internally Flawless	Very Very Slightly Included	Very Slightly Included	Slightly Included	Included
------------------------	--------------------------------	---------------------------	----------------------	----------

LABORATORY GROWN DIAMOND REPORT



August 13, 2025

IGI Report Number **LG727589445**Description **LABORATORY GROWN DIAMOND**

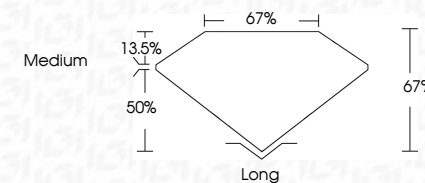
Shape and Cutting Style **EMERALD CUT**

Measurements **8.55 X 6.13 X 4.11 MM**

GRADING RESULTS

Carat Weight **2.10 CARATS**

Color Grade	E
-------------	---

Clarity Grade VVS 2

ADDITIONAL GRADING INFORMATION

Polish **EXCELLENT**Symmetry **EXCELLENT**Fluorescence **NONE**Inscription(s) **151** LG727589445

Comments: This Laboratory Grown Diamond was created by Chemical Vapor Deposition (CVD) growth process.
Type IIa



www.igi.org

© IGI 2020, International Gemological Institute

FD - 10 20



THIS DOCUMENT WAS PRODUCED WITH THE FOLLOWING SECURITY MEASURES: SPECIAL DOCUMENT PAPER, INK SCREENS, WATERMARK, BACKGROUND DESIGNS, HOLOGRAM AND OTHER SECURITY FEATURES NOT LISTED AND DO EXCEED DOCUMENT SECURITY INDUSTRY GUIDELINES

August 13, 2025
GJ Report No. 1G727589A45

Report No. Z627	2.10 CARATS
Report No. Z677599445	
GENERAL CUT	
3.65 X 6.13 X 4.11 MM	
Color	E
Clarity	VVS 2
Depth	67%
Table	67%
Girdle	Medium
Culet	Long
Polish	EXCELLENT
Symmetry	EXCELLENT
Fluorescence	NONE
Inscriptions(s)	661 (G777599445)

Comments:
This Laboratory Grown Diamond was
created by Chemical Vapor Deposition
(CVD) growth process.