



ELECTRONIC COPY

LG727585780
Report verification at igi.org



August 20, 2025
IGI Report Number **LG727585780**
Description **LABORATORY GROWN DIAMOND**
Shape and Cutting Style **SQUARE CUSHION MODIFIED BRILLIANT**
Measurements **6.45 X 6.32 X 4.39 MM**
GRADING RESULTS
Carat Weight **1.51 CARAT**
Color Grade **FANCY VIVID PINK**
Clarity Grade **VVS 2**

LABORATORY GROWN DIAMOND REPORT

August 20, 2025
IGI Report Number **LG727585780**
Description **LABORATORY GROWN DIAMOND**
Shape and Cutting Style **SQUARE CUSHION MODIFIED BRILLIANT**
Measurements **6.45 X 6.32 X 4.39 MM**

GRADING RESULTS

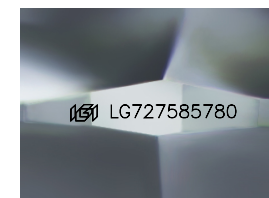
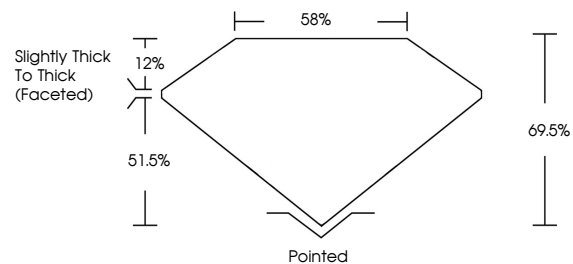
Carat Weight **1.51 CARAT**
Color Grade **FANCY VIVID PINK**
Clarity Grade **VVS 2**

ADDITIONAL GRADING INFORMATION

Polish **EXCELLENT**
Symmetry **EXCELLENT**
Fluorescence **STRONG**
Inscription(s) **IGI LG727585780**

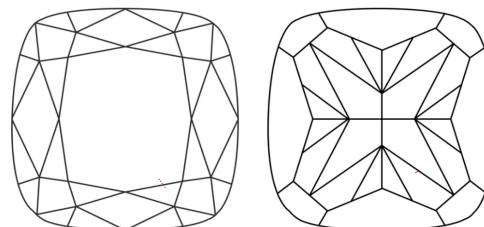
Comments: This Laboratory Grown Diamond was created by Chemical Vapor Deposition (CVD) growth process.
Indications of post-growth treatment.

PROPORTIONS



Sample Image Used

CLARITY CHARACTERISTICS



KEY TO SYMBOLS

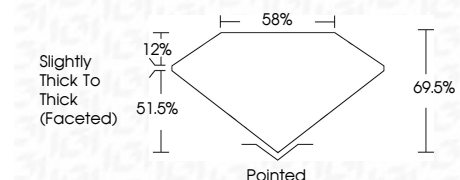
Red symbols indicate internal characteristics.
Green symbols indicate external characteristics.

COLOR

D E F G H I J Faint Very Light Light

CLARITY

IF	VS ¹⁻²	VS ¹⁻²	SI ¹⁻²	I ¹⁻³
Internally Flawless	Very Very Slightly Included	Very Slightly Included	Slightly Included	Included



ADDITIONAL GRADING INFORMATION

Polish **EXCELLENT**
Symmetry **EXCELLENT**
Fluorescence **STRONG**
Inscription(s) **IGI LG727585780**
Comments: This Laboratory Grown Diamond was created by Chemical Vapor Deposition (CVD) growth process.
Indications of post-growth treatment.



August 20, 2025
IGI Report No LG727585780
SQUARE CUSHION MODIFIED BRILLIANT
6.45 X 6.32 X 4.39 MM
1.51 CARAT
FANCY VIVID PINK
VVS 2
69.5%
58%
Slightly Thick To Thick (Faceted)
Pointed
EXCELLENT
EXCELLENT
STRONG
IGI LG727585780
Comments: This Laboratory Grown Diamond was created by Chemical Vapor Deposition (CVD) growth process.
Indications of post-growth treatment.