



ELECTRONIC COPY

LG727582546
Report verification at igi.org



August 18, 2025
IGI Report Number **LG727582546**
Description **LABORATORY GROWN DIAMOND**
Shape and Cutting Style **EMERALD CUT**
Measurements **10.27 X 7.34 X 4.92 MM**
GRADING RESULTS
Carat Weight **3.92 CARATS**
Color Grade **D**
Clarity Grade **INTERNALLY FLAWLESS**

August 18, 2025
IGI Report Number **LG727582546**
Description **LABORATORY GROWN DIAMOND**
Shape and Cutting Style **EMERALD CUT**
Measurements **10.27 X 7.34 X 4.92 MM**

GRADING RESULTS

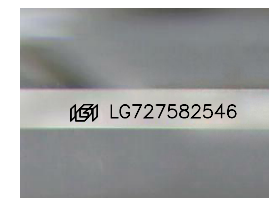
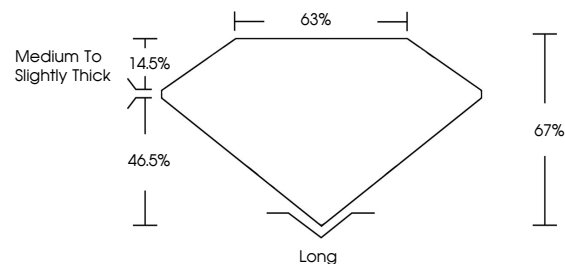
Carat Weight **3.92 CARATS**
Color Grade **D**
Clarity Grade **INTERNALLY FLAWLESS**

ADDITIONAL GRADING INFORMATION

Polish **EXCELLENT**
Symmetry **EXCELLENT**
Fluorescence **NONE**
Inscription(s) **IGI LG727582546**

Comments: As Grown - No indication of post-growth treatment.
This Laboratory Grown Diamond was created by High Pressure High Temperature (HPHT) growth process.
Type II

PROPORTIONS



Sample Image Used

CLARITY CHARACTERISTICS



KEY TO SYMBOLS

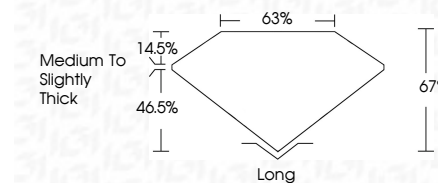
Red symbols indicate internal characteristics.
Green symbols indicate external characteristics.

COLOR

D E F G H I J Faint Very Light Light

CLARITY

IF	VS ¹⁻²	VS ¹⁻²	SI ¹⁻²	I ¹⁻³
Internally Flawless	Very Very Slightly Included	Very Slightly Included	Slightly Included	Included



ADDITIONAL GRADING INFORMATION

Polish **EXCELLENT**
Symmetry **EXCELLENT**
Fluorescence **NONE**
Inscription(s) **IGI LG727582546**
Comments: As Grown - No indication of post-growth treatment.
This Laboratory Grown Diamond was created by High Pressure High Temperature (HPHT) growth process.
Type II



IGI

August 18, 2025
IGI Report No LG727582546
EMERALD CUT
3.92 CARATS
D
14.5%
46.5%
67%
Medium to Slightly Thick
Long
EXCELLENT
EXCELLENT
NONE
IGI LG727582546

Comments: As Grown - No indication of post-growth treatment.
This Laboratory Grown Diamond was created by High Pressure High Temperature (HPHT) growth process.
Type II