



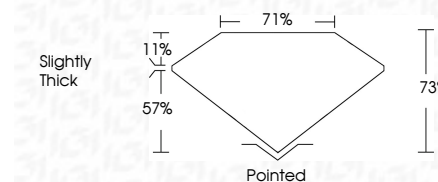
ELECTRONIC COPY

LG727579622
Report verification at igi.org



August 10, 2025
IGI Report Number **LG727579622**
Description **LABORATORY GROWN DIAMOND**
Shape and Cutting Style **PRINCESS CUT**
Measurements **8.67 X 8.64 X 6.31 MM**

GRADING RESULTS
Carat Weight **4.07 CARATS**
Color Grade **E**
Clarity Grade **VVS 2**

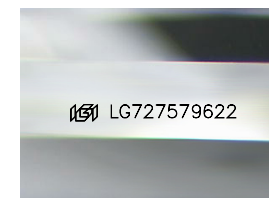


ADDITIONAL GRADING INFORMATION
Polish **EXCELLENT**
Symmetry **EXCELLENT**
Fluorescence **NONE**
Inscription(s) **IGI LG727579622**
Comments: This Laboratory Grown Diamond was created by Chemical Vapor Deposition (CVD) growth process. Type IIa



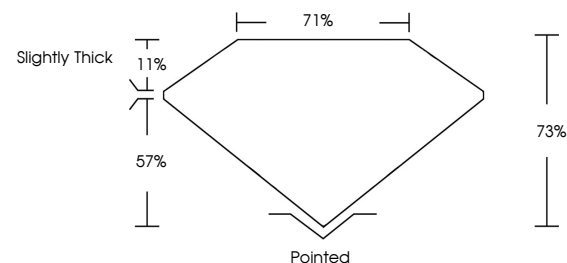
August 10, 2025
IGI Report No **LG727579622**
PRINCESS CUT
4.07 CARATS
Carat Weight **E**
Color Grade **VVS 2**
Clarity Grade **78%**
Depth **71%**
Table **Slightly Thick**
Girdle **Pointed**
Culet **EXCELLENT**
Polish **EXCELLENT**
Symmetry **EXCELLENT**
Fluorescence **NONE**
Inscription(s) **IGI LG727579622**

Comments: This Laboratory Grown Diamond was created by Chemical Vapor Deposition (CVD) growth process. Type IIa

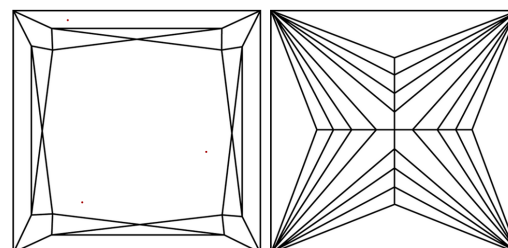


Sample Image Used

PROPORTIONS



CLARITY CHARACTERISTICS



KEY TO SYMBOLS

Red symbols indicate internal characteristics.
Green symbols indicate external characteristics.

COLOR

D E F G H I J Faint Very Light Light

CLARITY

IF WS¹⁻² VS¹⁻² SI¹⁻² I¹⁻³

Internally Flawless Very Very Slightly Included Very Slightly Included Slightly Included Included

