



**INTERNATIONAL
GEMOLOGICAL
INSTITUTE**

LABORATORY GROWN DIAMOND REPORT

August 19, 2025
 IGI Report Number **LG727578087**
 Description **LABORATORY GROWN DIAMOND**
 Shape and Cutting Style **ROUND BRILLIANT**
 Measurements **5.17 - 5.21 X 3.11 MM**

GRADING RESULTS

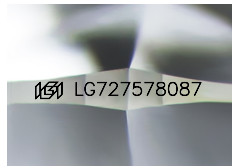
Carat Weight **0.51 CARAT**
 Color Grade **FANCY INTENSE PINK ORANGE**
 Clarity Grade **VVS 2**
 Cut Grade **IDEAL**

ADDITIONAL GRADING INFORMATION

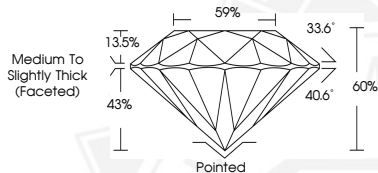
Polish **EXCELLENT**
 Symmetry **EXCELLENT**
 Fluorescence **SLIGHT**
 Inscription(s) **IGI LG727578087**

Comments: This Laboratory Grown Diamond was created by High Pressure High Temperature (HPHT) growth process. Indications of post-growth treatment.

ELECTRONIC COPY



Sample Image Used



August 19, 2025
 IGI Report Number **LG727578087**
 ROUND BRILLIANT
 LABORATORY GROWN DIAMOND
 5.17 - 5.21 X 3.11 MM
 Carat Weight **0.51 CARAT**
 Color Grade **FANCY INTENSE PINK ORANGE**
 Clarity Grade **VVS 2**
 Cut Grade **IDEAL**
 Polish **EXCELLENT**
 Symmetry **EXCELLENT**
 Fluorescence **SLIGHT**
 Inscription(s) **IGI LG727578087**

Comments: This Laboratory Grown Diamond was created by High Pressure High Temperature (HPHT) growth process. Indications of post-growth treatment.



August 19, 2025
 IGI Report Number **LG727578087**
 ROUND BRILLIANT
 LABORATORY GROWN DIAMOND
 5.17 - 5.21 X 3.11 MM
 Carat Weight **0.51 CARAT**
 Color Grade **FANCY INTENSE PINK ORANGE**
 Clarity Grade **VVS 2**
 Cut Grade **IDEAL**
 Polish **EXCELLENT**
 Symmetry **EXCELLENT**
 Fluorescence **SLIGHT**
 Inscription(s) **IGI LG727578087**

Comments: This Laboratory Grown Diamond was created by High Pressure High Temperature (HPHT) growth process. Indications of post-growth treatment.



THIS DOCUMENT WAS PRODUCED WITH THE FOLLOWING SECURITY MEASURES: SPECIAL DOCUMENT PAPER, INK SCREENS, WATERMARK, BACKGROUND DESIGNS, HOLOGRAM AND OTHER SECURITY FEATURES NOT LISTED AND DO EXCEED DOCUMENT SECURITY INDUSTRY GUIDELINES.

For terms & conditions and to verify this report, please visit www.igi.org