



# INTERNATIONAL GEMOLOGICAL INSTITUTE

ELECTRONIC COPY

## LABORATORY GROWN DIAMOND REPORT

August 18, 2025

IGI Report Number

LG727568809

Description

LABORATORY GROWN DIAMOND

Shape and Cutting Style

ROUND BRILLIANT

Measurements

3.65 - 3.69 X 2.22 MM

### GRADING RESULTS

Carat Weight

0.18 CARAT

Color Grade

FANCY VIVID PINK

Clarity Grade

VVS 2

Cut Grade

EXCELLENT

### ADDITIONAL GRADING INFORMATION

Polish

VERY GOOD

Symmetry

VERY GOOD

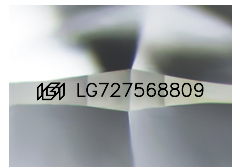
Fluorescence

SLIGHT

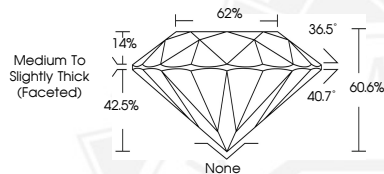
Inscription(s)

IGI LG727568809

Comments: This Laboratory Grown Diamond was created by High Pressure High Temperature (HPHT) growth process. Indications of post-growth treatment.



Sample Image Used



August 18, 2025

IGI Report Number LG727568809

ROUND BRILLIANT

LABORATORY GROWN DIAMOND

3.65 - 3.69 X 2.22 MM

Carat Weight 0.18 CARAT

Color Grade FANCY VIVID PINK

Clarity Grade VVS 2

Cut Grade EXCELLENT

Polish VERY GOOD

Symmetry VERY GOOD

Fluorescence SLIGHT

Inscription(s) IGI LG727568809

Comments: This Laboratory Grown Diamond was created by High Pressure High Temperature (HPHT) growth process. Indications of post-growth treatment.



August 18, 2025

IGI Report Number LG727568809

ROUND BRILLIANT

LABORATORY GROWN DIAMOND

3.65 - 3.69 X 2.22 MM

Carat Weight 0.18 CARAT

Color Grade FANCY VIVID PINK

Clarity Grade VVS 2

Cut Grade EXCELLENT

Polish VERY GOOD

Symmetry VERY GOOD

Fluorescence SLIGHT

Inscription(s) IGI LG727568809

Comments: This Laboratory Grown Diamond was created by High Pressure High Temperature (HPHT) growth process. Indications of post-growth treatment.



THIS DOCUMENT WAS PRODUCED WITH THE FOLLOWING SECURITY MEASURES: SPECIAL DOCUMENT PAPER, INK SCREENS, WATERMARK, BACKGROUND DESIGNS, HOLOGRAM AND OTHER SECURITY FEATURES NOT LISTED AND DO EXCEED DOCUMENT SECURITY INDUSTRY GUIDELINES.

For terms & conditions and to verify this report, please visit [www.igi.org](http://www.igi.org)