



INTERNATIONAL GEMOLOGICAL INSTITUTE

ELECTRONIC COPY



August 18, 2025

IGI Report Number LG727568800

ROUND BRILLIANT

LABORATORY GROWN DIAMOND

3.49 - 3.51 X 2.20 MM

| | |
|----------------|-----------------|
| Carat Weight | 0.17 CARAT |
| Color Grade | FANCY PINK |
| Clarity Grade | VS 2 |
| Cut Grade | VERY GOOD |
| Polish | GOOD |
| Symmetry | VERY GOOD |
| Fluorescence | SLIGHT |
| Inscription(s) | IGI LG727568800 |

Comments: This Laboratory Grown Diamond was created by High Pressure High Temperature (HPHT) growth process. Indications of post-growth treatment.

LABORATORY GROWN DIAMOND REPORT

August 18, 2025

IGI Report Number

LG727568800

Description

LABORATORY GROWN DIAMOND

Shape and Cutting Style

ROUND BRILLIANT

Measurements

3.49 - 3.51 X 2.20 MM

GRADING RESULTS

Carat Weight

0.17 CARAT

Color Grade

FANCY PINK

Clarity Grade

VS 2

Cut Grade

VERY GOOD

ADDITIONAL GRADING INFORMATION

Polish

GOOD

Symmetry

VERY GOOD

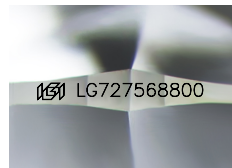
Fluorescence

SLIGHT

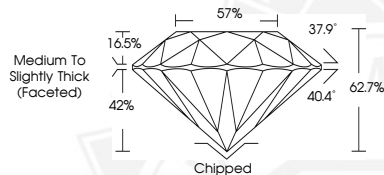
Inscription(s)

IGI LG727568800

Comments: This Laboratory Grown Diamond was created by High Pressure High Temperature (HPHT) growth process. Indications of post-growth treatment.



Sample Image Used



August 18, 2025

IGI Report Number LG727568800

ROUND BRILLIANT

LABORATORY GROWN DIAMOND

3.49 - 3.51 X 2.20 MM

| | |
|----------------|-----------------|
| Carat Weight | 0.17 CARAT |
| Color Grade | FANCY PINK |
| Clarity Grade | VS 2 |
| Cut Grade | VERY GOOD |
| Polish | GOOD |
| Symmetry | VERY GOOD |
| Fluorescence | SLIGHT |
| Inscription(s) | IGI LG727568800 |

Comments: This Laboratory Grown Diamond was created by High Pressure High Temperature (HPHT) growth process. Indications of post-growth treatment.



THIS DOCUMENT WAS PRODUCED WITH THE FOLLOWING SECURITY MEASURES: SPECIAL DOCUMENT PAPER, INK SCREENS, WATERMARK, BACKGROUND DESIGNS, HOLOGRAM AND OTHER SECURITY FEATURES NOT LISTED AND DO EXCEED DOCUMENT SECURITY INDUSTRY GUIDELINES.

For terms & conditions and to verify this report, please visit www.igi.org