



ELECTRONIC COPY

LG727567546
Report verification at igi.org



August 12, 2025
IGI Report Number **LG727567546**
Description **LABORATORY GROWN DIAMOND**
Shape and Cutting Style **CUSHION MODIFIED BRILLIANT**
Measurements **8.23 X 7.77 X 5.47 MM**
GRADING RESULTS
Carat Weight **3.01 CARATS**
Color Grade **F**
Clarity Grade **VVS 2**

August 12, 2025
IGI Report Number **LG727567546**
Description **LABORATORY GROWN DIAMOND**
Shape and Cutting Style **CUSHION MODIFIED BRILLIANT**
Measurements **8.23 X 7.77 X 5.47 MM**

GRADING RESULTS

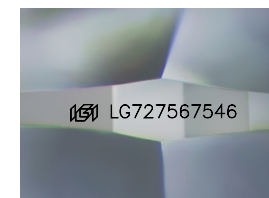
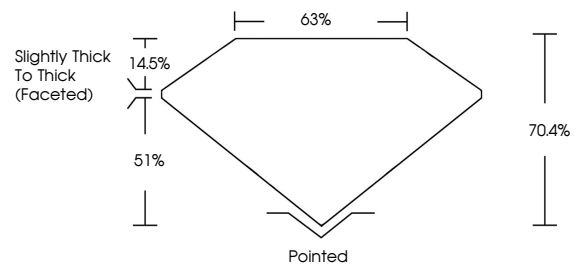
Carat Weight **3.01 CARATS**
Color Grade **F**
Clarity Grade **VVS 2**

ADDITIONAL GRADING INFORMATION

Polish **VERY GOOD**
Symmetry **EXCELLENT**
Fluorescence **NONE**
Inscription(s) **IGI LG727567546**

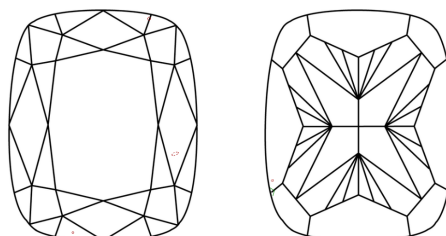
Comments: This Laboratory Grown Diamond was created by Chemical Vapor Deposition (CVD) growth process. Type IIa

PROPORTIONS



Sample Image Used

CLARITY CHARACTERISTICS



KEY TO SYMBOLS

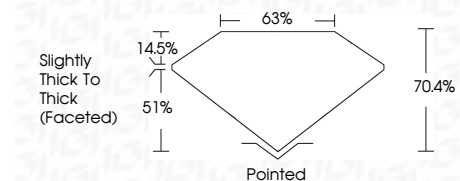
Red symbols indicate internal characteristics.
Green symbols indicate external characteristics.

COLOR

D E F G H I J Faint Very Light Light

CLARITY

IF	VS ¹⁻²	VS ¹⁻²	SI ¹⁻²	I ¹⁻³
Internally Flawless	Very Very Slightly Included	Very Slightly Included	Slightly Included	Included



ADDITIONAL GRADING INFORMATION

Polish **VERY GOOD**
Symmetry **EXCELLENT**
Fluorescence **NONE**
Inscription(s) **IGI LG727567546**
Comments: This Laboratory Grown Diamond was created by Chemical Vapor Deposition (CVD) growth process. Type IIa



August 12, 2025
IGI Report No LG727567546
CUSHION MODIFIED BRILLIANT
8.23 X 7.77 X 5.47 MM
3.01 CARATS
F
VVS 2
70.4%
63%
Slightly Thick To Thick (Faceted)
Pointed
VERY GOOD
EXCELLENT
NONE
IGI LG727567546
Comments: This Laboratory Grown Diamond was created by Chemical Vapor Deposition (CVD) growth process. Type IIa