



**ELECTRONIC COPY**

LG727565159  
Report verification at igi.org



August 14, 2025  
IGI Report Number **LG727565159**  
Description **LABORATORY GROWN DIAMOND**  
Shape and Cutting Style **CUSHION MODIFIED BRILLIANT**  
Measurements **17.67 X 15.60 X 10.27 MM**  
**GRADING RESULTS**  
Carat Weight **30.07 CARATS**  
Color Grade **FANCY INTENSE PINK**  
Clarity Grade **VS 2**

**LABORATORY GROWN DIAMOND REPORT**

August 14, 2025  
IGI Report Number **LG727565159**  
Description **LABORATORY GROWN DIAMOND**  
Shape and Cutting Style **CUSHION MODIFIED BRILLIANT**  
Measurements **17.67 X 15.60 X 10.27 MM**

**GRADING RESULTS**

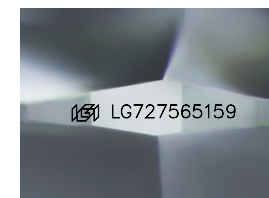
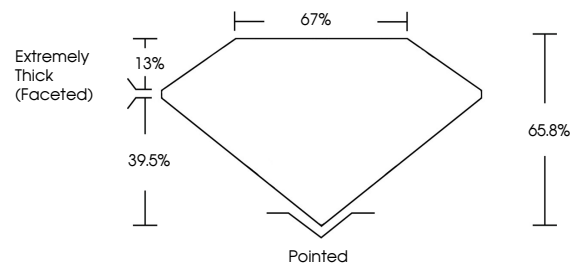
Carat Weight **30.07 CARATS**  
Color Grade **FANCY INTENSE PINK**  
Clarity Grade **VS 2**

**ADDITIONAL GRADING INFORMATION**

Polish **EXCELLENT**  
Symmetry **EXCELLENT**  
Fluorescence **STRONG**  
Inscription(s) **IGI LG727565159**

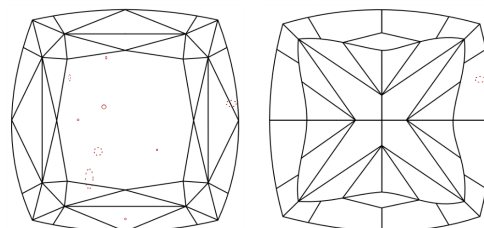
Comments: This Laboratory Grown Diamond was created by Chemical Vapor Deposition (CVD) growth process. Indications of post-growth treatment.

**PROPORTIONS**



Sample Image Used

**CLARITY CHARACTERISTICS**



**KEY TO SYMBOLS**

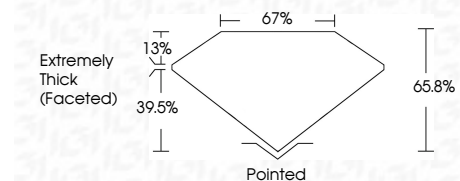
Red symbols indicate internal characteristics.  
Green symbols indicate external characteristics.

**COLOR**

D E F G H I J Faint Very Light Light

**CLARITY**

IF	VS <sup>1-2</sup>	VS <sup>1-2</sup>	SI <sup>1-2</sup>	I <sup>1-3</sup>
Internally Flawless	Very Very Slightly Included	Very Slightly Included	Slightly Included	Included



**ADDITIONAL GRADING INFORMATION**

Polish **EXCELLENT**  
Symmetry **EXCELLENT**  
Fluorescence **STRONG**  
Inscription(s) **IGI LG727565159**  
Comments: This Laboratory Grown Diamond was created by Chemical Vapor Deposition (CVD) growth process. Indications of post-growth treatment.



August 14, 2025  
IGI Report No LG727565159  
CUSHION MODIFIED BRILLIANT  
17.67 X 15.60 X 10.27 MM  
30.07 CARATS  
FANCY INTENSE PINK  
VS 2  
65.8%  
67%  
Extremely Thick (Faceted)  
Pointed  
EXCELLENT  
EXCELLENT  
STRONG  
IGI LG727565159  
Comments: This Laboratory Grown Diamond was created by Chemical Vapor Deposition (CVD) growth process. Indications of post-growth treatment.