



ELECTRONIC COPY

LABORATORY GROWN DIAMOND REPORT

August 8, 2025
IGI Report Number LG727565078
Description LABORATORY GROWN DIAMOND
Shape and Cutting Style CUT CORNERED RECTANGULAR MODIFIED BRILLIANT
Measurements 10.53 X 7.02 X 4.75 MM

GRADING RESULTS

Carat Weight 3.05 CARATS
Color Grade G
Clarity Grade VS 1

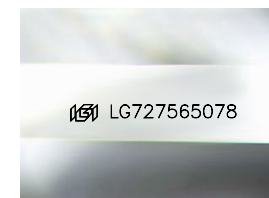
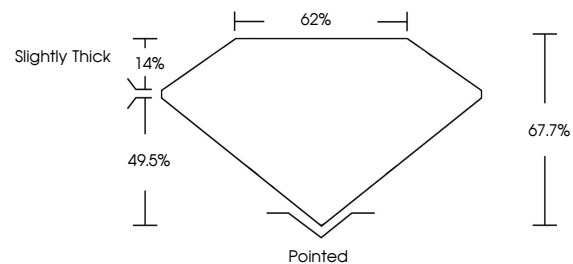
ADDITIONAL GRADING INFORMATION

Polish EXCELLENT
Symmetry EXCELLENT
Fluorescence NONE

Inscription(s) IGI LG727565078

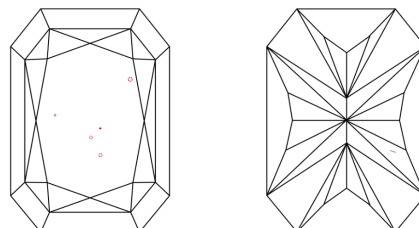
Comments: This Laboratory Grown Diamond was created by Chemical Vapor Deposition (CVD) growth process.
Type IIa

PROPORTIONS



Sample Image Used

CLARITY CHARACTERISTICS



KEY TO SYMBOLS

Red symbols indicate internal characteristics.
Green symbols indicate external characteristics.

COLOR

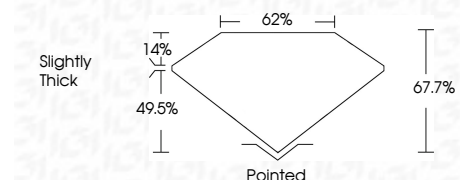
D E F G H I J Faint Very Light Light

CLARITY

IF WS¹⁻² VS¹⁻² SI¹⁻² I¹⁻³
Internally Flawless Very Very Slightly Included Very Slightly Included Slightly Included Included



August 8, 2025
IGI Report Number LG727565078
Description LABORATORY GROWN DIAMOND
Shape and Cutting Style CUT CORNERED RECTANGULAR MODIFIED BRILLIANT
Measurements 10.53 X 7.02 X 4.75 MM
GRADING RESULTS
Carat Weight 3.05 CARATS
Color Grade G
Clarity Grade VS 1



ADDITIONAL GRADING INFORMATION

Polish EXCELLENT
Symmetry EXCELLENT
Fluorescence NONE
Inscription(s) IGI LG727565078
Comments: This Laboratory Grown Diamond was created by Chemical Vapor Deposition (CVD) growth process.
Type IIa



August 8, 2025
IGI Report No LG727565078
CUT CORNERED RECT. MODIFIED BRILLIANT
10.53 X 7.02 X 4.75 MM
3.05 CARATS
G
VS 1
67.7%
62%
Slightly Thick
Pointed
EXCELLENT
EXCELLENT
NONE
IGI LG727565078

Comments: This Laboratory Grown Diamond was created by Chemical Vapor Deposition (CVD) growth process.
Type IIa