



ELECTRONIC COPY

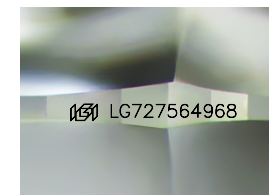
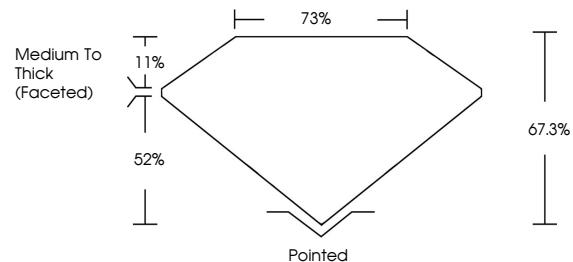
LG727564968 Report verification at igi.org



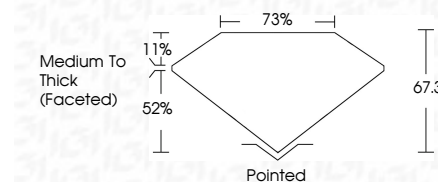
August 14, 2025 IGI Report Number LG727564968 Description LABORATORY GROWN DIAMOND Shape and Cutting Style CUSHION MODIFIED BRILLIANT Measurements 10.18 X 7.56 X 5.09 MM GRADING RESULTS Carat Weight 3.61 CARATS Color Grade FANCY VIVID PINK Clarity Grade VVS 2

August 14, 2025 IGI Report Number LG727564968 Description LABORATORY GROWN DIAMOND Shape and Cutting Style CUSHION MODIFIED BRILLIANT Measurements 10.18 X 7.56 X 5.09 MM GRADING RESULTS Carat Weight 3.61 CARATS Color Grade FANCY VIVID PINK Clarity Grade VVS 2

PROPORTIONS



Sample Image Used



ADDITIONAL GRADING INFORMATION

Polish EXCELLENT Symmetry VERY GOOD Fluorescence STRONG Inscription(s) LG727564968

Comments: This Laboratory Grown Diamond was created by Chemical Vapor Deposition (CVD) growth process. Indications of post-growth treatment.

Secondary color: Orange

COLOR

D E F G H I J Faint Very Light Light

CLARITY

IF VVS 1-2 VS 1-2 SI 1-2 I 1-3 Internally Flawless Very Very Slightly Included Very Slightly Included Slightly Included Included

ADDITIONAL GRADING INFORMATION

Polish EXCELLENT Symmetry VERY GOOD Fluorescence STRONG Inscription(s) LG727564968 Comments: This Laboratory Grown Diamond was created by Chemical Vapor Deposition (CVD) growth process. Indications of post-growth treatment. Secondary color: Orange



August 14, 2025 IGI Report No LG727564968 CUSHION MODIFIED BRILLIANT 10.18 X 7.56 X 5.09 MM 3.61 CARATS FANCY VIVID PINK VVS 2 67.3% 73% Medium To Thick (Faceted) Polished EXCELLENT VERY GOOD STRONG LG727564968

Comments: This Laboratory Grown Diamond was created by Chemical Vapor Deposition (CVD) growth process. Indications of post-growth treatment. Secondary color: Orange