



ELECTRONIC COPY

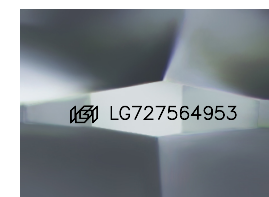
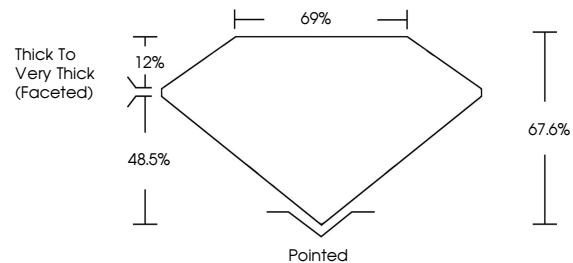
LG727564953
Report verification at igi.org



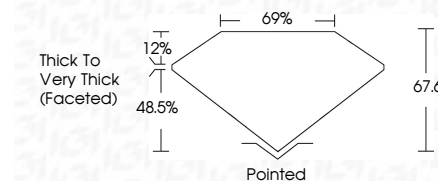
August 13, 2025
IGI Report Number **LG727564953**
Description **LABORATORY GROWN DIAMOND**
Shape and Cutting Style **CUSHION MODIFIED BRILLIANT**
Measurements **7.81 X 5.87 X 3.97 MM**
GRADING RESULTS
Carat Weight **1.71 CARAT**
Color Grade **FANCY VIVID PINK**
Clarity Grade **VVS 2**

August 13, 2025
IGI Report Number **LG727564953**
Description **LABORATORY GROWN DIAMOND**
Shape and Cutting Style **CUSHION MODIFIED BRILLIANT**
Measurements **7.81 X 5.87 X 3.97 MM**
GRADING RESULTS
Carat Weight **1.71 CARAT**
Color Grade **FANCY VIVID PINK**
Clarity Grade **VVS 2**

PROPORTIONS



Sample Image Used



ADDITIONAL GRADING INFORMATION

Polish **EXCELLENT**
Symmetry **VERY GOOD**
Fluorescence **STRONG**
Inscription(s) **IGI LG727564953**

Comments: This Laboratory Grown Diamond was created by Chemical Vapor Deposition (CVD) growth process.
Indications of post-growth treatment.

Secondary color: Orange

COLOR

D E F G H I J Faint Very Light Light

CLARITY

IF	VS ¹⁻²	VS ¹⁻²	SI ¹⁻²	I ¹⁻³
Internally Flawless	Very Very Slightly Included	Very Slightly Included	Slightly Included	Included

ADDITIONAL GRADING INFORMATION

Polish **EXCELLENT**
Symmetry **VERY GOOD**
Fluorescence **STRONG**
Inscription(s) **IGI LG727564953**
Comments: This Laboratory Grown Diamond was created by Chemical Vapor Deposition (CVD) growth process.
Indications of post-growth treatment.
Secondary color: Orange



August 13, 2025
IGI Report No **LG727564953**
CUSHION MODIFIED BRILLIANT
7.81 X 5.87 X 3.97 MM
1.71 CARAT
FANCY VIVID PINK
VVS 2
67.6%
69%
Thick to Very Thick (Faceted)
Pointed
EXCELLENT
VERY GOOD
STRONG
IGI LG727564953

Comments: This Laboratory Grown Diamond was created by Chemical Vapor Deposition (CVD) growth process.
Indications of post-growth treatment.
Secondary color: Orange