



LABORATORY GROWN DIAMOND REPORT

August 12, 2025
 IGI Report Number **LG727563084**
 Description **LABORATORY GROWN DIAMOND**
 Shape and Cutting Style **ROUND BRILLIANT**
 Measurements **5.03 - 5.06 X 3.09 MM**

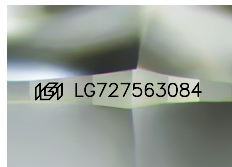
GRADING RESULTS

Carat Weight **0.48 CARAT**
 Color Grade **D**
 Clarity Grade **VS 1**
 Cut Grade **IDEAL**

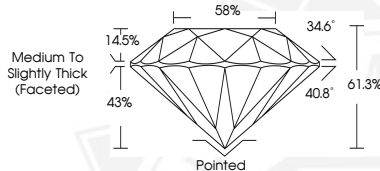
ADDITIONAL GRADING INFORMATION

Polish **EXCELLENT**
 Symmetry **EXCELLENT**
 Fluorescence **NONE**
 Inscription(s) **IGI LG727563084**

Comments: This Laboratory Grown Diamond was created by
 Chemical Vapor Deposition (CVD) growth process.
 Type IIa



Sample Image Used



August 12, 2025
 IGI Report Number **LG727563084**
ROUND BRILLIANT
LABORATORY GROWN DIAMOND
5.03 - 5.06 X 3.09 MM
 Carat Weight **0.48 CARAT**
 Color Grade **D**
 Clarity Grade **VS 1**
 Cut Grade **IDEAL**
 Polish **EXCELLENT**
 Symmetry **EXCELLENT**
 Fluorescence **NONE**
 Inscription(s) **IGI LG727563084**
 Comments: This Laboratory Grown
 Diamond was created by
 Chemical Vapor Deposition (CVD)
 growth process. Type IIa



August 12, 2025
 IGI Report Number **LG727563084**
ROUND BRILLIANT
LABORATORY GROWN DIAMOND
5.03 - 5.06 X 3.09 MM
 Carat Weight **0.48 CARAT**
 Color Grade **D**
 Clarity Grade **VS 1**
 Cut Grade **IDEAL**
 Polish **EXCELLENT**
 Symmetry **EXCELLENT**
 Fluorescence **NONE**
 Inscription(s) **IGI LG727563084**
 Comments: This Laboratory Grown
 Diamond was created by
 Chemical Vapor Deposition (CVD)
 growth process. Type IIa

THIS DOCUMENT WAS PRODUCED WITH THE FOLLOWING SECURITY MEASURES: SPECIAL DOCUMENT PAPER, INK SCREENS, WATERMARK, BACKGROUND DESIGNS, HOLOGRAM AND OTHER SECURITY FEATURES NOT LISTED AND DO EXCEED DOCUMENT SECURITY INDUSTRY GUIDELINES.