



**LABORATORY GROWN DIAMOND REPORT**

August 11, 2025  
 IGI Report Number **LG727563011**  
 Description **LABORATORY GROWN DIAMOND**  
 Shape and Cutting Style **ROUND BRILLIANT**  
 Measurements **4.75 - 4.77 X 2.95 MM**

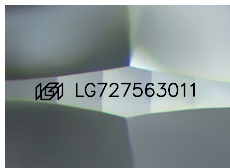
**GRADING RESULTS**

Carat Weight **0.41 CARAT**  
 Color Grade **F**  
 Clarity Grade **VVS 2**  
 Cut Grade **IDEAL**

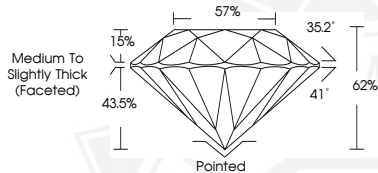
**ADDITIONAL GRADING INFORMATION**

Polish **EXCELLENT**  
 Symmetry **VERY GOOD**  
 Fluorescence **NONE**  
 Inscription(s) **IGI LG727563011**

Comments: This Laboratory Grown Diamond was created by Chemical Vapor Deposition (CVD) growth process. Type IIa



Sample Image Used



August 11, 2025  
 IGI Report Number **LG727563011**  
**ROUND BRILLIANT**  
**LABORATORY GROWN DIAMOND**  
**4.75 - 4.77 X 2.95 MM**  
**0.41 CARAT**  
**F**  
**VVS 2**  
**IDEAL**  
**EXCELLENT**  
**VERY GOOD**  
**NONE**  
**IGI LG727563011**  
 Comments: This Laboratory Grown Diamond was created by Chemical Vapor Deposition (CVD) growth process. Type IIa



August 11, 2025  
 IGI Report Number **LG727563011**  
**ROUND BRILLIANT**  
**LABORATORY GROWN DIAMOND**  
**4.75 - 4.77 X 2.95 MM**  
**0.41 CARAT**  
**F**  
**VVS 2**  
**IDEAL**  
**EXCELLENT**  
**VERY GOOD**  
**NONE**  
**IGI LG727563011**  
 Comments: This Laboratory Grown Diamond was created by Chemical Vapor Deposition (CVD) growth process. Type IIa



THIS DOCUMENT WAS PRODUCED WITH THE FOLLOWING SECURITY MEASURES: SPECIAL DOCUMENT PAPER, INK SCREENS, WATERMARK, BACKGROUND DESIGNS, HOLOGRAM AND OTHER SECURITY FEATURES NOT LISTED AND DO EXCEED DOCUMENT SECURITY INDUSTRY GUIDELINES.