



ELECTRONIC COPY

LG727562824
Report verification at igi.org



August 30, 2025

IGI Report Number **LG727562824**

Description **LABORATORY GROWN DIAMOND**

Shape and Cutting Style **EMERALD CUT**

Measurements **14.71 X 9.40 X 6.09 MM**

GRADING RESULTS

Carat Weight **9.09 CARATS**

Color Grade **F**

Clarity Grade **VVS 2**

August 30, 2025
IGI Report Number **LG727562824**
Description **LABORATORY GROWN DIAMOND**
Shape and Cutting Style **EMERALD CUT**
Measurements **14.71 X 9.40 X 6.09 MM**

GRADING RESULTS

Carat Weight **9.09 CARATS**

Color Grade **F**

Clarity Grade **VVS 2**

ADDITIONAL GRADING INFORMATION

Polish **EXCELLENT**

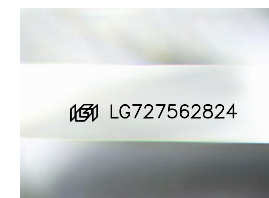
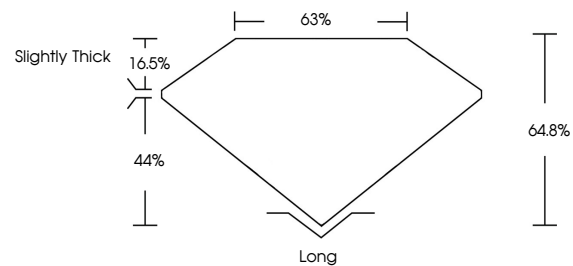
Symmetry **EXCELLENT**

Fluorescence **NONE**

Inscription(s) **IGI LG727562824**

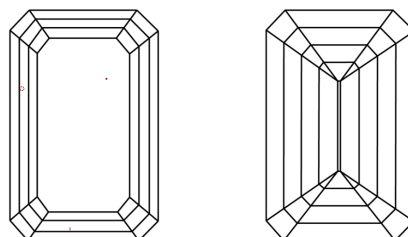
Comments: This Laboratory Grown Diamond was created by Chemical Vapor Deposition (CVD) growth process.
Type IIa

PROPORTIONS



Sample Image Used

CLARITY CHARACTERISTICS



KEY TO SYMBOLS

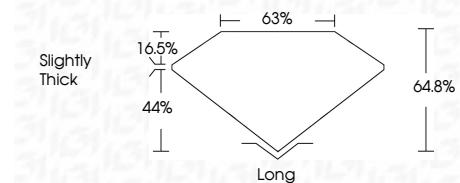
Red symbols indicate internal characteristics.
Green symbols indicate external characteristics.

COLOR

D E F G H I J Faint Very Light Light

CLARITY

IF	VS ¹⁻²	VVS ¹⁻²	S ¹⁻²	I ¹⁻³
Internally Flawless	Very Very Slightly Included	Very Slightly Included	Slightly Included	Included



ADDITIONAL GRADING INFORMATION

Polish **EXCELLENT**

Symmetry **EXCELLENT**

Fluorescence **NONE**

Inscription(s) **IGI LG727562824**

Comments: This Laboratory Grown Diamond was created by Chemical Vapor Deposition (CVD) growth process.
Type IIa



August 30, 2025
IGI Report No LG727562824
EMERALD CUT
9.09 CARATS
F
9.09 CARATS
VVS 2
64.8%
63%
Slightly Thick
Long
EXCELLENT
EXCELLENT
NONE
IGI LG727562824
Comments: This Laboratory Grown Diamond was created by Chemical Vapor Deposition (CVD) growth process.
Type IIa