



ELECTRONIC COPY

LG727560121
Report verification at igi.org



August 18, 2025
IGI Report Number **LG727560121**
Description **LABORATORY GROWN DIAMOND**
Shape and Cutting Style **ROUND BRILLIANT**
Measurements **11.84 - 11.90 X 6.95 MM**
GRADING RESULTS
Carat Weight **6.01 CARATS**
Color Grade **FANCY DEEP PINK**
Clarity Grade **SI 1**
Cut Grade **EXCELLENT**

August 18, 2025
IGI Report Number **LG727560121**
Description **LABORATORY GROWN DIAMOND**
Shape and Cutting Style **ROUND BRILLIANT**
Measurements **11.84 - 11.90 X 6.95 MM**

GRADING RESULTS

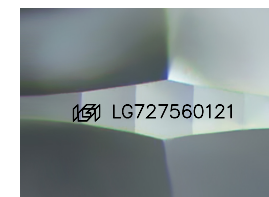
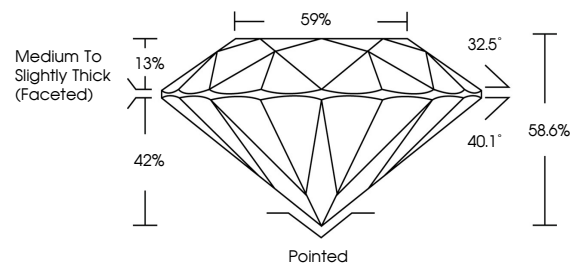
Carat Weight **6.01 CARATS**
Color Grade **FANCY DEEP PINK**
Clarity Grade **SI 1**
Cut Grade **EXCELLENT**

ADDITIONAL GRADING INFORMATION

Polish **EXCELLENT**
Symmetry **EXCELLENT**
Fluorescence **SLIGHT**
Inscription(s) **IGI LG727560121**

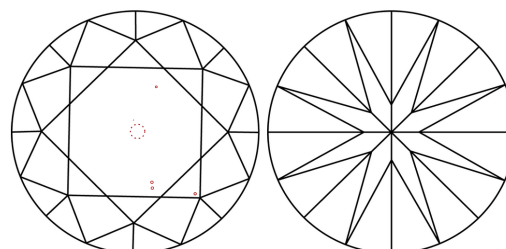
Comments: This Laboratory Grown Diamond was created by Chemical Vapor Deposition (CVD) growth process.
Indications of post-growth treatment.

PROPORTIONS



Sample Image Used

CLARITY CHARACTERISTICS



KEY TO SYMBOLS

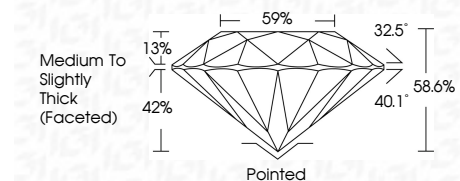
Red symbols indicate internal characteristics.
Green symbols indicate external characteristics.

COLOR

D E F G H I J Faint Very Light Light

CLARITY

IF	VS ¹⁻²	VS ¹⁻²	SI ¹⁻²	I ¹⁻³
Internally Flawless	Very Very Slightly Included	Very Slightly Included	Slightly Included	Included



ADDITIONAL GRADING INFORMATION

Polish **EXCELLENT**
Symmetry **EXCELLENT**
Fluorescence **SLIGHT**
Inscription(s) **IGI LG727560121**
Comments: This Laboratory Grown Diamond was created by Chemical Vapor Deposition (CVD) growth process.
Indications of post-growth treatment.



August 18, 2025
IGI Report No LG727560121
ROUND BRILLIANT
11.84 - 11.90 X 6.95 MM
6.01 CARATS
FANCY DEEP PINK
SI 1
EXCELLENT
88.0%
59%
Medium To Slightly Thick (Faceted)
Pointed
EXCELLENT
EXCELLENT
SLIGHT
IGI LG727560121
Comments: This Laboratory Grown Diamond was created by Chemical Vapor Deposition (CVD) growth process.
Indications of post-growth treatment.