



ELECTRONIC COPY

LABORATORY GROWN DIAMOND REPORT

August 13, 2025
 IGI Report Number **LG727556054**
 Description **LABORATORY GROWN DIAMOND**
 Shape and Cutting Style **CUSHION MODIFIED BRILLIANT**
 Measurements **9.21 X 6.64 X 4.59 MM**
GRADING RESULTS
 Carat Weight **2.67 CARATS**
 Color Grade **FANCY INTENSE PINK**
 Clarity Grade **VS 1**

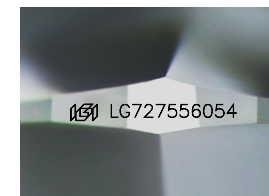
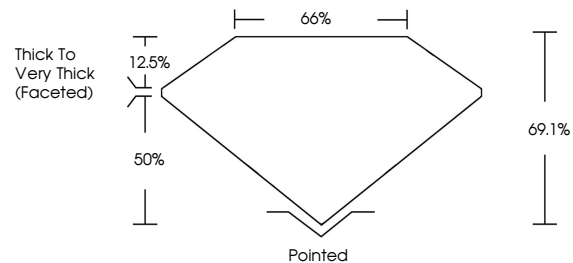
ADDITIONAL GRADING INFORMATION

Polish **VERY GOOD**
 Symmetry **EXCELLENT**
 Fluorescence **STRONG**
 Inscription(s) **(IGI) LG727556054**

Comments: This Laboratory Grown Diamond was created by Chemical Vapor Deposition (CVD) growth process.
 Indications of post-growth treatment.

Secondary color: Orange

PROPORTIONS



Sample Image Used

COLOR

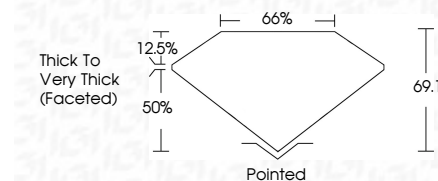
D E F G H I J Faint Very Light Light

CLARITY

IF	VS ¹⁻²	VS ¹⁻²	SI ¹⁻²	I ¹⁻³
Internally Flawless	Very Very Slightly Included	Very Slightly Included	Slightly Included	Included



August 13, 2025
 IGI Report Number **LG727556054**
 Description **LABORATORY GROWN DIAMOND**
 Shape and Cutting Style **CUSHION MODIFIED BRILLIANT**
 Measurements **9.21 X 6.64 X 4.59 MM**
GRADING RESULTS
 Carat Weight **2.67 CARATS**
 Color Grade **FANCY INTENSE PINK**
 Clarity Grade **VS 1**



ADDITIONAL GRADING INFORMATION

Polish **VERY GOOD**
 Symmetry **EXCELLENT**
 Fluorescence **STRONG**
 Inscription(s) **(IGI) LG727556054**
 Comments: This Laboratory Grown Diamond was created by Chemical Vapor Deposition (CVD) growth process.
 Indications of post-growth treatment.
 Secondary color: Orange



August 13, 2025
 IGI Report No **LG727556054**
CUSHION MODIFIED BRILLIANT
9.21 X 6.64 X 4.59 MM
 Carat Weight **2.67 CARATS**
 Color Grade **FANCY INTENSE PINK**
 Clarity Grade **VS 1**
 Depth **69.1%**
 Table **66%**
 Girdle **Thick to Very Thick (Faceted)**
 Culet **Pointed**
 Polish **VERY GOOD**
 Symmetry **EXCELLENT**
 Fluorescence **STRONG**
 Inscription(s) **(IGI) LG727556054**

Comments: This Laboratory Grown Diamond was created by Chemical Vapor Deposition (CVD) growth process.
 Indications of post-growth treatment.
 Secondary color: Orange