



LABORATORY GROWN DIAMOND REPORT

August 8, 2025
 IGI Report Number **LG727552347**
 Description **LABORATORY GROWN DIAMOND**
 Shape and Cutting Style **ROUND BRILLIANT**
 Measurements **4.89 - 4.95 X 2.98 MM**

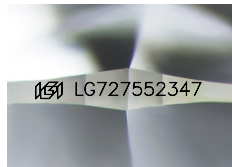
GRADING RESULTS

Carat Weight **0.44 CARAT**
 Color Grade **D**
 Clarity Grade **VS 1**
 Cut Grade **IDEAL**

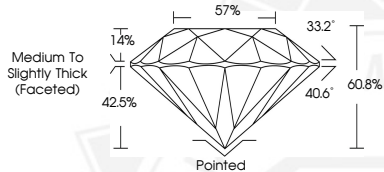
ADDITIONAL GRADING INFORMATION

Polish **EXCELLENT**
 Symmetry **EXCELLENT**
 Fluorescence **NONE**
 Inscription(s) **IGI LG727552347**

Comments: As Grown - No indication of post-growth treatment. This Laboratory Grown Diamond was created by High Pressure High Temperature (HPHT) growth process. Type II



Sample Image Used



August 8, 2025
 IGI Report Number **LG727552347**
 ROUND BRILLIANT
 LABORATORY GROWN DIAMOND
 4.89 - 4.95 X 2.98 MM
 0.44 CARAT
 D
 VS 1
 IDEAL
 EXCELLENT
 EXCELLENT
 NONE
 IGI LG727552347

Comments: As Grown - No indication of post-growth treatment. This Laboratory Grown Diamond was created by High Pressure High Temperature (HPHT) growth process. Type II



August 8, 2025
 IGI Report Number **LG727552347**
 ROUND BRILLIANT
 LABORATORY GROWN DIAMOND
 4.89 - 4.95 X 2.98 MM
 0.44 CARAT
 D
 VS 1
 IDEAL
 EXCELLENT
 EXCELLENT
 NONE
 IGI LG727552347

Comments: As Grown - No indication of post-growth treatment. This Laboratory Grown Diamond was created by High Pressure High Temperature (HPHT) growth process. Type II

THIS DOCUMENT WAS PRODUCED WITH THE FOLLOWING SECURITY MEASURES: SPECIAL DOCUMENT PAPER, INK SCREENS, WATERMARK, BACKGROUND DESIGNS, HOLOGRAM AND OTHER SECURITY FEATURES NOT LISTED AND DO EXCEED DOCUMENT SECURITY INDUSTRY GUIDELINES.