



ELECTRONIC COPY

LG727550853
Report verification at igi.org



August 13, 2025
IGI Report Number **LG727550853**
Description **LABORATORY GROWN DIAMOND**
Shape and Cutting Style **SQUARE CUSHION MODIFIED BRILLIANT**
Measurements **7.13 X 7.01 X 4.59 MM**
GRADING RESULTS
Carat Weight **2.05 CARATS**
Color Grade **FANCY YELLOW**
Clarity Grade **VVS 2**

August 13, 2025
IGI Report Number **LG727550853**
Description **LABORATORY GROWN DIAMOND**
Shape and Cutting Style **SQUARE CUSHION MODIFIED BRILLIANT**
Measurements **7.13 X 7.01 X 4.59 MM**

GRADING RESULTS

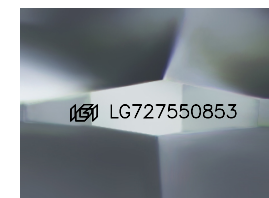
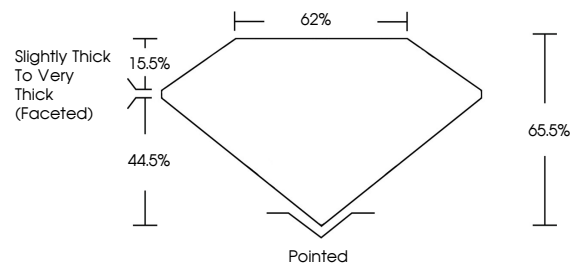
Carat Weight **2.05 CARATS**
Color Grade **FANCY YELLOW**
Clarity Grade **VVS 2**

ADDITIONAL GRADING INFORMATION

Polish **EXCELLENT**
Symmetry **EXCELLENT**
Fluorescence **NONE**
Inscription(s) **IGI LG727550853**

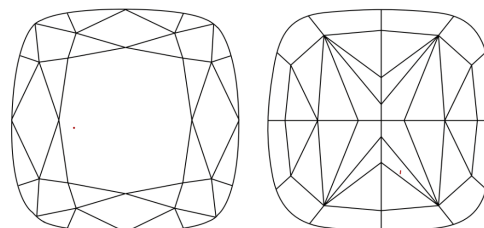
Comments: This Laboratory Grown Diamond was created by Chemical Vapor Deposition (CVD) growth process.

PROPORTIONS



Sample Image Used

CLARITY CHARACTERISTICS



KEY TO SYMBOLS

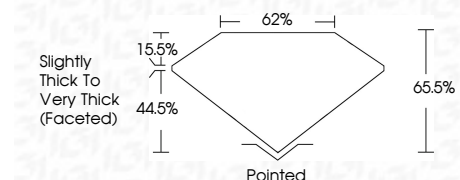
Red symbols indicate internal characteristics.
Green symbols indicate external characteristics.

COLOR

D E F G H I J Faint Very Light Light

CLARITY

IF	VS ¹⁻²	VS ¹⁻²	SI ¹⁻²	I ¹⁻³
Internally Flawless	Very Very Slightly Included	Very Slightly Included	Slightly Included	Included



ADDITIONAL GRADING INFORMATION

Polish **EXCELLENT**
Symmetry **EXCELLENT**
Fluorescence **NONE**
Inscription(s) **IGI LG727550853**
Comments: This Laboratory Grown Diamond was created by Chemical Vapor Deposition (CVD) growth process.



August 13, 2025
IGI Report No LG727550853
SQUARE CUSHION MODIFIED BRILLIANT
7.13 X 7.01 X 4.59 MM
2.05 CARATS
FANCY YELLOW
VVS 2
65.5%
62%
Slightly Thick To Very Thick (Faceted)
Pointed
EXCELLENT
EXCELLENT
NONE
IGI LG727550853
Comments: This Laboratory Grown Diamond was created by Chemical Vapor Deposition (CVD) growth process.