



**ELECTRONIC COPY**

LG727542958  
Report verification at igi.org



August 8, 2025  
IGI Report Number **LG727542958**  
Description **LABORATORY GROWN DIAMOND**  
Shape and Cutting Style **MODIFIED MARQUISE STEP CUT**  
Measurements **10.12 X 6.60 X 3.93 MM**  
**GRADING RESULTS**  
Carat Weight **1.86 CARAT**  
Color Grade **E**  
Clarity Grade **VS 1**

**LABORATORY GROWN DIAMOND REPORT**

August 8, 2025  
IGI Report Number **LG727542958**  
Description **LABORATORY GROWN DIAMOND**  
Shape and Cutting Style **MODIFIED MARQUISE STEP CUT**  
Measurements **10.12 X 6.60 X 3.93 MM**

**GRADING RESULTS**

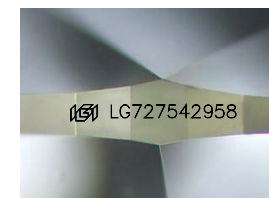
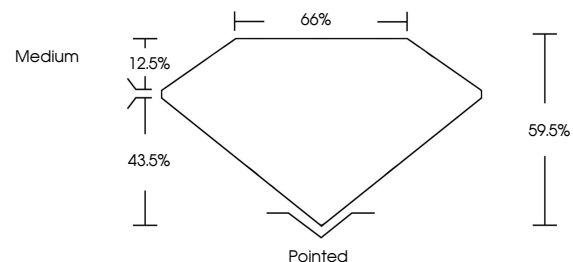
Carat Weight **1.86 CARAT**  
Color Grade **E**  
Clarity Grade **VS 1**

**ADDITIONAL GRADING INFORMATION**

Polish **EXCELLENT**  
Symmetry **EXCELLENT**  
Fluorescence **NONE**  
Inscription(s) **IGI LG727542958**

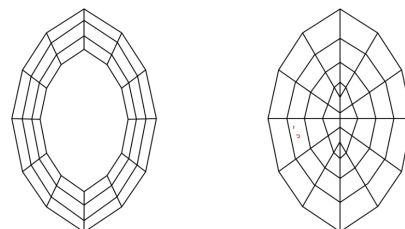
Comments: This Laboratory Grown Diamond was created by Chemical Vapor Deposition (CVD) growth process.  
Type IIa

**PROPORTIONS**



Sample Image Used

**CLARITY CHARACTERISTICS**



**KEY TO SYMBOLS**

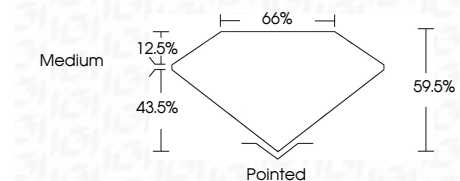
Red symbols indicate internal characteristics.  
Green symbols indicate external characteristics.

**COLOR**

D E F G H I J Faint Very Light Light

**CLARITY**

IF	VS <sup>1-2</sup>	VS <sup>1-2</sup>	SI <sup>1-2</sup>	I <sup>1-3</sup>
Internally Flawless	Very Very Slightly Included	Very Slightly Included	Slightly Included	Included



**ADDITIONAL GRADING INFORMATION**

Polish **EXCELLENT**  
Symmetry **EXCELLENT**  
Fluorescence **NONE**  
Inscription(s) **IGI LG727542958**  
Comments: This Laboratory Grown Diamond was created by Chemical Vapor Deposition (CVD) growth process.  
Type IIa



August 8, 2025  
IGI Report No LG727542958  
**MODIFIED MARQUISE STEP CUT**  
10.12 X 6.60 X 3.93 MM  
1.86 CARAT  
E  
VS 1  
66.0%  
43.5%  
Medium  
Pointed  
EXCELLENT  
EXCELLENT  
NONE  
IGI LG727542958  
Comments: This Laboratory Grown Diamond was created by Chemical Vapor Deposition (CVD) growth process.  
Type IIa