



**ELECTRONIC COPY**

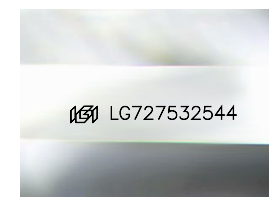
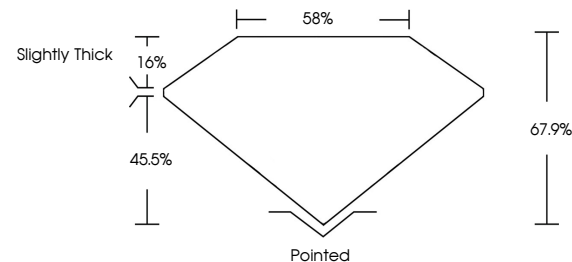
LG727532544  
Report verification at igi.org



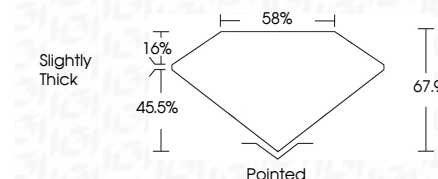
August 12, 2025  
IGI Report Number **LG727532544**  
Description **LABORATORY GROWN DIAMOND**  
Shape and Cutting Style **CUT CORNERED  
RECTANGULAR MODIFIED  
BRILLIANT**  
Measurements **8.86 X 6.75 X 4.58 MM**  
**GRADING RESULTS**  
Carat Weight **2.59 CARATS**  
Color Grade **FANCY VIVID YELLOW**  
Clarity Grade **VVS 2**

August 12, 2025  
IGI Report Number **LG727532544**  
Description **LABORATORY GROWN DIAMOND**  
Shape and Cutting Style **CUT CORNERED RECTANGULAR  
MODIFIED BRILLIANT**  
Measurements **8.86 X 6.75 X 4.58 MM**  
**GRADING RESULTS**  
Carat Weight **2.59 CARATS**  
Color Grade **FANCY VIVID YELLOW**  
Clarity Grade **VVS 2**

**PROPORTIONS**



Sample Image Used



**ADDITIONAL GRADING INFORMATION**

Polish **EXCELLENT**  
Symmetry **EXCELLENT**  
Fluorescence **NONE**  
Inscription(s) **IGI LG727532544**

Comments: This Laboratory Grown Diamond was created by Chemical Vapor Deposition (CVD) growth process.

**COLOR**

D E F G H I J Faint Very Light Light

**CLARITY**

IF	VS <sup>1-2</sup>	VS <sup>1-2</sup>	SI <sup>1-2</sup>	I <sup>1-3</sup>
Internally Flawless	Very Very Slightly Included	Very Slightly Included	Slightly Included	Included

**ADDITIONAL GRADING INFORMATION**

Polish **EXCELLENT**  
Symmetry **EXCELLENT**  
Fluorescence **NONE**  
Inscription(s) **IGI LG727532544**  
Comments: This Laboratory Grown Diamond was created by Chemical Vapor Deposition (CVD) growth process.



**IGI**



August 12, 2025  
IGI Report No LG727532544  
CUT CORNERED RECT. MODIFIED BRILLIANT  
8.86 X 6.75 X 4.58 MM  
2.59 CARATS  
FANCY VIVID YELLOW  
VVS 2  
67.9%  
85%  
Slightly Thick  
Pointed  
EXCELLENT  
EXCELLENT  
NONE  
IGI LG727532544

Comments: This Laboratory Grown Diamond was created by Chemical Vapor Deposition (CVD) growth process.