

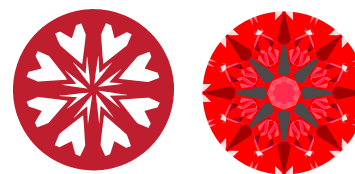


# INTERNATIONAL GEMOLOGICAL INSTITUTE

LG727530017  
Report verification at igi.org

## LIGHT PERFORMANCE REPORT

Light Performance Grade: **Exceptional**

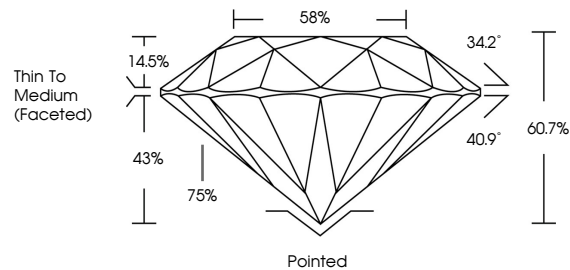


### Structured Light Environment Representation

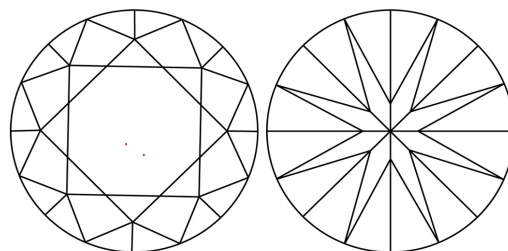


<b>CLARITY</b>					
FL	IF	VS <sup>1-2</sup>	VS <sup>1-2</sup>	SI <sup>1-2</sup>	I <sup>1-3</sup>
Flawless	Internally Flawless	Very Very Slightly Included	Very Slightly Included	Slightly Included	Included

### PROPORTIONS

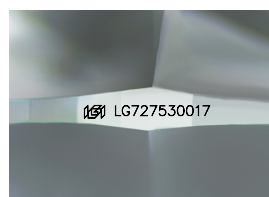


### CLARITY CHARACTERISTICS



### KEY TO SYMBOLS

Red symbols indicate internal characteristics.  
Green symbols indicate external characteristics.



Sample Image Used

www.igi.org

## ELECTRONIC COPY

### LABORATORY GROWN DIAMOND REPORT

October 7, 2025  
 IGI Report Number **LG727530017**  
 Description **LABORATORY GROWN DIAMOND**  
 Shape and Cutting Style **ROUND BRILLIANT**  
 Measurements **11.07 - 11.10 x 6.73 mm**

### GRADING RESULTS

Carat Weight **5.03 CARATS**  
 Color Grade **E**  
 Clarity Grade **VVS 2**  
 Cut Grade **IDEAL**

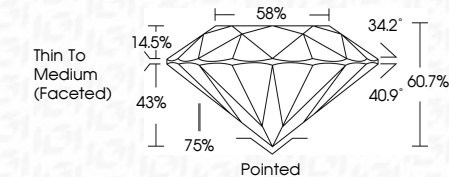
### ADDITIONAL GRADING INFORMATION

Polish **EXCELLENT**  
 Symmetry **EXCELLENT**  
 Fluorescence **NONE**  
 Inscription(s) **IGI LG727530017**

Comments: HEARTS & ARROWS  
This Laboratory Grown Diamond was created by Chemical Vapor Deposition (CVD) growth process. Type IIa



October 7, 2025  
 IGI Report Number **LG727530017**  
 Description **LABORATORY GROWN DIAMOND**  
 Shape and Cutting Style **ROUND BRILLIANT**  
 Measurements **11.07 - 11.10 X 6.73 MM**  
**GRADING RESULTS**  
 Carat Weight **5.03 CARATS**  
 Color Grade **E**  
 Clarity Grade **VVS 2**  
 Cut Grade **IDEAL**



### ADDITIONAL GRADING INFORMATION

Polish **EXCELLENT**  
 Symmetry **EXCELLENT**  
 Fluorescence **NONE**  
 Inscription(s) **IGI LG727530017**  
 Comments: HEARTS & ARROWS  
 This Laboratory Grown Diamond was created by Chemical Vapor Deposition (CVD) growth process. Type IIa



# IGI

October 7, 2025  
 IGI Report No LG727530017  
**ROUND BRILLIANT**  
 11.07 - 11.10 X 6.73 MM  
 Carat Weight **5.03 CARATS**  
 Color Grade **E**  
 Clarity Grade **VVS 2**  
 Cut Grade **IDEAL**  
 Depth **43%**  
 Table **58%**  
 Grade **Thin To Medium (Faceted)**  
 Polish **Pointed**  
 Symmetry **EXCELLENT**  
 Fluorescence **EXCELLENT**  
 Inscription(s) **NONE**  
 IGI LG727530017  
 Comments: HEARTS & ARROWS  
 This Laboratory Grown Diamond was created by Chemical Vapor Deposition (CVD) growth process. Type IIa

