



INTERNATIONAL GEMOLOGICAL INSTITUTE

ELECTRONIC COPY

LABORATORY GROWN DIAMOND REPORT

August 7, 2025

IGI Report Number

LG727525735

Description

LABORATORY GROWN DIAMOND

Shape and Cutting Style

ROUND BRILLIANT

Measurements

5.70 - 5.72 X 3.52 MM

GRADING RESULTS

Carat Weight

0.71 CARAT

Color Grade

D

Clarity Grade

VVS 2

Cut Grade

EXCELLENT

ADDITIONAL GRADING INFORMATION

Polish

VERY GOOD

Symmetry

VERY GOOD

Fluorescence

NONE

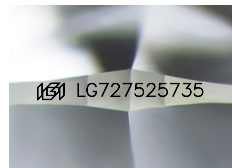
Inscription(s)

IGI LG727525735

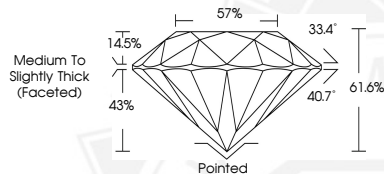
Comments: As Grown - No indication of post-growth treatment.

This Laboratory Grown Diamond was created by High Pressure High Temperature (HPHT) growth process.

Type II



Sample Image Used



August 7, 2025

IGI Report Number LG727525735

ROUND BRILLIANT

LABORATORY GROWN DIAMOND

5.70 - 5.72 X 3.52 MM

Carat Weight 0.71 CARAT

Color Grade D

Clarity Grade VVS 2

Cut Grade EXCELLENT

Polish VERY GOOD

Symmetry VERY GOOD

Fluorescence NONE

Inscription(s) IGI LG727525735

Comments: As Grown - No indication of post-growth treatment. This Laboratory Grown Diamond was created by High Pressure High Temperature (HPHT) growth process. Type II



August 7, 2025

IGI Report Number LG727525735

ROUND BRILLIANT

LABORATORY GROWN DIAMOND

5.70 - 5.72 X 3.52 MM

Carat Weight 0.71 CARAT

Color Grade D

Clarity Grade VVS 2

Cut Grade EXCELLENT

Polish VERY GOOD

Symmetry VERY GOOD

Fluorescence NONE

Inscription(s) IGI LG727525735

Comments: As Grown - No indication of post-growth treatment. This Laboratory Grown Diamond was created by High Pressure High Temperature (HPHT) growth process. Type II



THIS DOCUMENT WAS PRODUCED WITH THE FOLLOWING SECURITY MEASURES: SPECIAL DOCUMENT PAPER, INK SCREENS, WATERMARK, BACKGROUND DESIGNS, HOLOGRAM AND OTHER SECURITY FEATURES NOT LISTED AND DO EXCEED DOCUMENT SECURITY INDUSTRY GUIDELINES.

For terms & conditions and to verify this report, please visit www.igi.org