



LABORATORY GROWN DIAMOND REPORT

August 7, 2025
 IGI Report Number **LG727525722**
 Description **LABORATORY GROWN DIAMOND**
 Shape and Cutting Style **ROUND BRILLIANT**
 Measurements **5.79 - 5.85 X 3.49 MM**

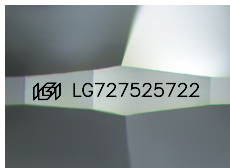
GRADING RESULTS

Carat Weight **0.72 CARAT**
 Color Grade **D**
 Clarity Grade **VS 1**
 Cut Grade **VERY GOOD**

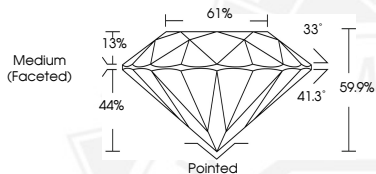
ADDITIONAL GRADING INFORMATION

Polish **VERY GOOD**
 Symmetry **GOOD**
 Fluorescence **NONE**
 Inscription(s) **IGI LG727525722**

Comments: As Grown - No indication of post-growth treatment.
 This Laboratory Grown Diamond was created by High Pressure High Temperature (HPHT) growth process.
 Type II



Sample Image Used



August 7, 2025
 IGI Report Number **LG727525722**
 ROUND BRILLIANT
 LABORATORY GROWN DIAMOND
5.79 - 5.85 X 3.49 MM
 Carat Weight **0.72 CARAT**
 Color Grade **D**
 Clarity Grade **VS 1**
 Cut Grade **VERY GOOD**
 Polish **VERY GOOD**
 Symmetry **GOOD**
 Fluorescence **NONE**
 Inscription(s) **IGI LG727525722**

Comments: As Grown - No indication of post-growth treatment. This Laboratory Grown Diamond was created by High Pressure High Temperature (HPHT) growth process. Type II



August 7, 2025
 IGI Report Number **LG727525722**
 ROUND BRILLIANT
 LABORATORY GROWN DIAMOND
5.79 - 5.85 X 3.49 MM
 Carat Weight **0.72 CARAT**
 Color Grade **D**
 Clarity Grade **VS 1**
 Cut Grade **VERY GOOD**
 Polish **VERY GOOD**
 Symmetry **GOOD**
 Fluorescence **NONE**
 Inscription(s) **IGI LG727525722**

Comments: As Grown - No indication of post-growth treatment. This Laboratory Grown Diamond was created by High Pressure High Temperature (HPHT) growth process. Type II

THIS DOCUMENT WAS PRODUCED WITH THE FOLLOWING SECURITY MEASURES: SPECIAL DOCUMENT PAPER, INK SCREENS, WATERMARK, BACKGROUND DESIGNS, HOLOGRAM AND OTHER SECURITY FEATURES NOT LISTED AND DO EXCEED DOCUMENT SECURITY INDUSTRY GUIDELINES.