

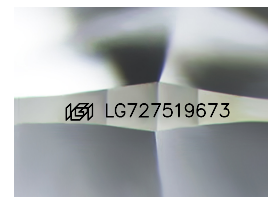
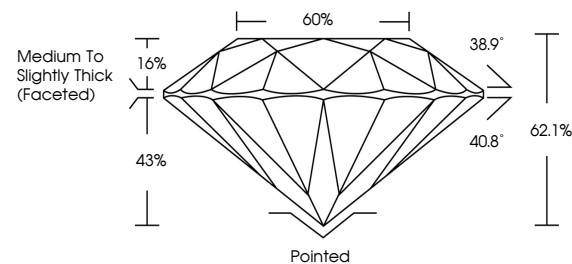


ELECTRONIC COPY

LABORATORY GROWN DIAMOND REPORT

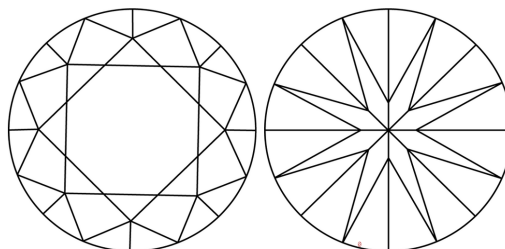
LG727519673
Report verification at igi.org

PROPORTIONS



Sample Image Used

CLARITY CHARACTERISTICS



KEY TO SYMBOLS

Red symbols indicate internal characteristics.
Green symbols indicate external characteristics.

COLOR

D E F G H I J Faint Very Light Light

CLARITY

IF WS¹⁻² VS¹⁻² S¹⁻² |¹⁻³

Internally Flawless	Very Very Slightly Included	Very Slightly Included	Slightly Included	Included
------------------------	--------------------------------	---------------------------	----------------------	----------



© IGI 2020, International Gemological Institute

FD - 10 20

www.igi.org

LABORATORY GROWN DIAMOND REPORT



August 5, 2025

IGI Report Number **LG727519673**Description **LABORATORY GROWN DIAMOND**Shape and Cutting Style **ROUND BRILLIANT**

Measurements 6.37 - 6.43 X 3.97 MM

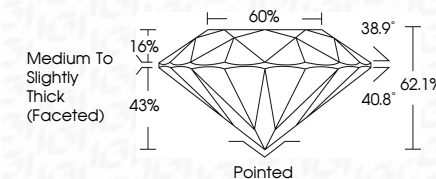
GRADING RESULTS

Carat Weight **1.02 CARAT**

Color Grade	E
-------------	---

Clarity Grade **VVS 2**

Cut Grade **GOOD**



ADDITIONAL GRADING INFORMATION

Polish VERY GOOD

Symmetry VERY GOOD

Fluorescence **NONE**Inscription(s) LG727519673

Comments: As Grown - No indication of post-growth treatment.

This Laboratory Grown Diamond was created by High Pressure High Temperature (HPHT) growth process.
Type II



August 5, 2025	1.02 CARAT
GI Report No. LG72751673	VVS 2
ROUND BRILLIANT	GOOD
	62.1%
	60%
	Medium to Slightly Thick (Faceted)
	Painted
	VERY GOOD
	VERY GOOD
	NONE
	#61 LG72751673
	Comments:
	As Seen - No Indication of post-growth treatment.
	This Laboratory Grown Diamond was created by High Pressure High Temperature (HPHT) growth process.
	Type IIa