



ELECTRONIC COPY

LG727519269
Report verification at igi.org



August 12, 2025

IGI Report Number **LG727519269**

Description **LABORATORY GROWN DIAMOND**

Shape and Cutting Style **BAGUETTE**

Measurements **8.56 X 4.77 X 2.89 MM**

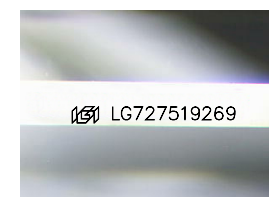
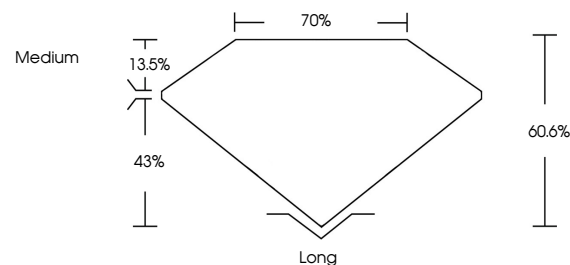
GRADING RESULTS

Carat Weight **1.34 CARAT**

Color Grade **D**

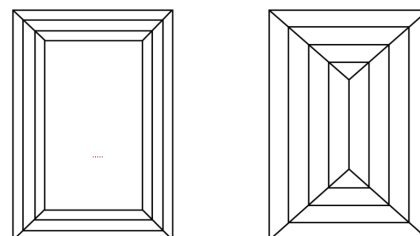
Clarity Grade **VVS 1**

PROPORTIONS



Sample Image Used

CLARITY CHARACTERISTICS



KEY TO SYMBOLS

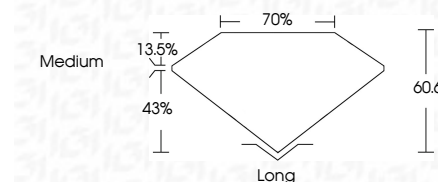
Red symbols indicate internal characteristics.
Green symbols indicate external characteristics.

COLOR

D E F G H I J Faint Very Light Light

CLARITY

IF	VS ¹⁻²	VS ¹⁻²	SI ¹⁻²	I ¹⁻³
Internally Flawless	Very Very Slightly Included	Very Slightly Included	Slightly Included	Included



ADDITIONAL GRADING INFORMATION

Polish **EXCELLENT**

Symmetry **EXCELLENT**

Fluorescence **NONE**

Inscription(s) **IGI LG727519269**

Comments: This Laboratory Grown Diamond was created by Chemical Vapor Deposition (CVD) growth process. Type IIa



IGI



August 12, 2025
IGI Report No LG727519269

BAGUETTE

1.34 CARAT
D

8.56 X 4.77 X 2.89 MM
Color Grade D
Clarity Grade VVS 1
Table 43%
Depth 60.6%
Girdle Medium

Long
EXCELLENT
EXCELLENT
NONE
IGI LG727519269

Comments: This Laboratory Grown Diamond was created by Chemical Vapor Deposition (CVD) growth process. Type IIa