



LABORATORY GROWN DIAMOND REPORT

August 18, 2025
 IGI Report Number **LG727518887**
 Description **LABORATORY GROWN DIAMOND**
 Shape and Cutting Style **ROUND BRILLIANT**
 Measurements **4.78 - 4.80 X 2.89 MM**

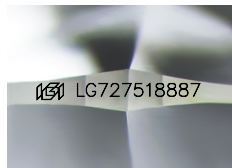
GRADING RESULTS

Carat Weight **0.41 CARAT**
 Color Grade **FANCY INTENSE YELLOW**
 Clarity Grade **VVS 2**
 Cut Grade **VERY GOOD**

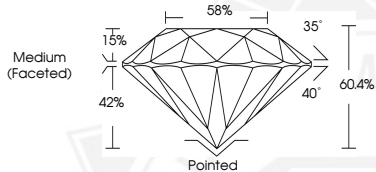
ADDITIONAL GRADING INFORMATION

Polish **VERY GOOD**
 Symmetry **VERY GOOD**
 Fluorescence **NONE**
 Inscription(s) **IGI LG727518887**

Comments: As Grown - No indication of post-growth treatment.
 This Laboratory Grown Diamond was created by High Pressure High Temperature (HPHT) growth process.



Sample Image Used



August 18, 2025
 IGI Report Number **LG727518887**
ROUND BRILLIANT
LABORATORY GROWN DIAMOND
4.78 - 4.80 X 2.89 MM
 Carat Weight **0.41 CARAT**
 Color Grade **FANCY INTENSE YELLOW**
 Clarity Grade **VVS 2**
 Cut Grade **VERY GOOD**
 Polish **VERY GOOD**
 Symmetry **VERY GOOD**
 Fluorescence **NONE**
 Inscription(s) **IGI LG727518887**

Comments: As Grown - No indication of post-growth treatment. This Laboratory Grown Diamond was created by High Pressure High Temperature (HPHT) growth process.



August 18, 2025
 IGI Report Number **LG727518887**
ROUND BRILLIANT
LABORATORY GROWN DIAMOND
4.78 - 4.80 X 2.89 MM
 Carat Weight **0.41 CARAT**
 Color Grade **FANCY INTENSE YELLOW**
 Clarity Grade **VVS 2**
 Cut Grade **VERY GOOD**
 Polish **VERY GOOD**
 Symmetry **VERY GOOD**
 Fluorescence **NONE**
 Inscription(s) **IGI LG727518887**

Comments: As Grown - No indication of post-growth treatment. This Laboratory Grown Diamond was created by High Pressure High Temperature (HPHT) growth process.



THIS DOCUMENT WAS PRODUCED WITH THE FOLLOWING SECURITY MEASURES: SPECIAL DOCUMENT PAPER, INK SCREENS, WATERMARK, BACKGROUND DESIGNS, HOLOGRAM AND OTHER SECURITY FEATURES NOT LISTED AND DO EXCEED DOCUMENT SECURITY INDUSTRY GUIDELINES.