



**LABORATORY GROWN DIAMOND REPORT**

August 13, 2025  
 IGI Report Number **LG727518816**  
 Description **LABORATORY GROWN DIAMOND**  
 Shape and Cutting Style **CUT CORNERED RECTANGULAR MODIFIED  
BRILLIANT**  
 Measurements **6.29 X 4.34 X 2.95 MM**

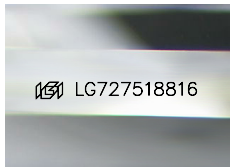
**GRADING RESULTS**

Carat Weight **0.74 CARAT**  
 Color Grade **FANCY VIVID YELLOW**  
 Clarity Grade **VS 1**

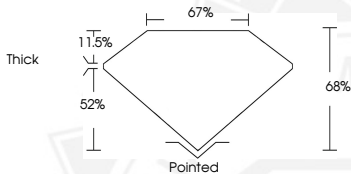
**ADDITIONAL GRADING INFORMATION**

Polish **VERY GOOD**  
 Symmetry **VERY GOOD**  
 Fluorescence **NONE**  
 Inscription(s) **IGI LG727518816**

Comments: As Grown - No indication of post-growth treatment.  
 This Laboratory Grown Diamond was created by High Pressure High  
 Temperature (HPHT) growth process.



Sample Image Used



August 13, 2025  
 IGI Report Number **LG727518816**  
 CUT CORNERED RECTANGULAR  
 MODIFIED BRILLIANT  
 LABORATORY GROWN DIAMOND  
**6.29 X 4.34 X 2.95 MM**  
 Carat Weight **0.74 CARAT**  
 Color Grade **FANCY VIVID  
YELLOW  
VS 1**  
 Clarity Grade  
 Polish **VERY GOOD**  
 Symmetry **VERY GOOD**  
 Fluorescence **NONE**  
 Inscription(s) **IGI LG727518816**

Comments: As Grown - No  
 indication of post-growth  
 treatment. This Laboratory Grown  
 Diamond was created by High  
 Pressure High Temperature (HPHT)  
 growth process.



August 13, 2025  
 IGI Report Number **LG727518816**  
 CUT CORNERED RECTANGULAR  
 MODIFIED BRILLIANT  
 LABORATORY GROWN DIAMOND  
**6.29 X 4.34 X 2.95 MM**  
 Carat Weight **0.74 CARAT**  
 Color Grade **FANCY VIVID  
YELLOW  
VS 1**  
 Clarity Grade  
 Polish **VERY GOOD**  
 Symmetry **VERY GOOD**  
 Fluorescence **NONE**  
 Inscription(s) **IGI LG727518816**

Comments: As Grown - No  
 indication of post-growth  
 treatment. This Laboratory Grown  
 Diamond was created by High  
 Pressure High Temperature (HPHT)  
 growth process.



THIS DOCUMENT WAS PRODUCED WITH THE FOLLOWING SECURITY MEASURES: SPECIAL DOCUMENT PAPER, INK SCREENS, WATERMARK, BACKGROUND DESIGNS, HOLOGRAM AND OTHER SECURITY FEATURES NOT LISTED AND DO EXCEED DOCUMENT SECURITY INDUSTRY GUIDELINES.