



ELECTRONIC COPY

LG727518813
Report verification at igi.org



August 6, 2025

IGI Report Number **LG727518813**

Description **LABORATORY GROWN DIAMOND**

Shape and Cutting Style **PRINCESS CUT**

Measurements **8.08 X 7.71 X 5.18 MM**

GRADING RESULTS

Carat Weight **2.90 CARATS**

Color Grade **E**

Clarity Grade **VS 1**

August 6, 2025

IGI Report Number **LG727518813**

Description **LABORATORY GROWN DIAMOND**

Shape and Cutting Style **PRINCESS CUT**

Measurements **8.08 X 7.71 X 5.18 MM**

GRADING RESULTS

Carat Weight **2.90 CARATS**

Color Grade **E**

Clarity Grade **VS 1**

ADDITIONAL GRADING INFORMATION

Polish **EXCELLENT**

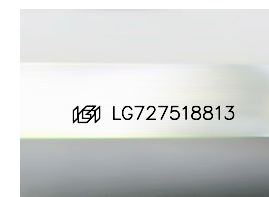
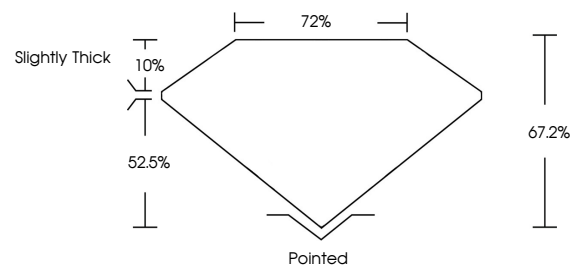
Symmetry **EXCELLENT**

Fluorescence **NONE**

Inscription(s) **IGI LG727518813**

Comments: This Laboratory Grown Diamond was created by Chemical Vapor Deposition (CVD) growth process.
Type IIa

PROPORTIONS



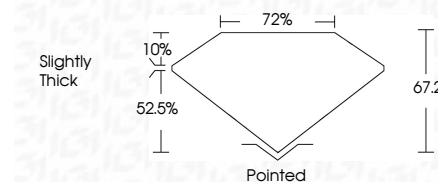
Sample Image Used

COLOR

D E F G H I J Faint Very Light Light

CLARITY

IF	VS ¹⁻²	VS ¹⁻²	SI ¹⁻²	I ¹⁻³
Internally Flawless	Very Very Slightly Included	Very Slightly Included	Slightly Included	Included



ADDITIONAL GRADING INFORMATION

Polish **EXCELLENT**

Symmetry **EXCELLENT**

Fluorescence **NONE**

Inscription(s) **IGI LG727518813**

Comments: This Laboratory Grown Diamond was created by Chemical Vapor Deposition (CVD) growth process.
Type IIa



IGI



August 6, 2025
IGI Report No LG727518813
PRINCESS CUT

2.90 CARATS
Carat Weight
Color Grade **E**
Clarity Grade **VS 1**
Table **67.2%**
Depth **72%**
Girdle **Slightly Thick**

Culet **Pointed**
Polish **EXCELLENT**
Symmetry **EXCELLENT**
Fluorescence **NONE**
Inscription(s) **IGI LG727518813**

Comments: This Laboratory Grown Diamond was created by Chemical Vapor Deposition (CVD) growth process.
Type IIa