



ELECTRONIC COPY

LG727510985
Report verification at igi.org



August 20, 2025

IGI Report Number **LG727510985**

Description **LABORATORY GROWN DIAMOND**

Shape and Cutting Style **ROUND BRILLIANT**

Measurements **7.57 - 7.63 X 4.82 MM**

GRADING RESULTS

Carat Weight **1.73 CARAT**

Color Grade **FANCY VIVID BLUE**

Clarity Grade **VS 2**

Cut Grade **VERY GOOD**

August 20, 2025
IGI Report Number **LG727510985**
Description **LABORATORY GROWN DIAMOND**
Shape and Cutting Style **ROUND BRILLIANT**
Measurements **7.57 - 7.63 X 4.82 MM**

GRADING RESULTS

Carat Weight **1.73 CARAT**

Color Grade **FANCY VIVID BLUE**

Clarity Grade **VS 2**

Cut Grade **VERY GOOD**

ADDITIONAL GRADING INFORMATION

Polish **VERY GOOD**

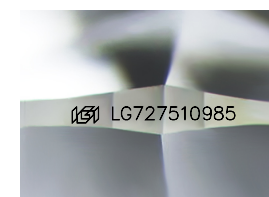
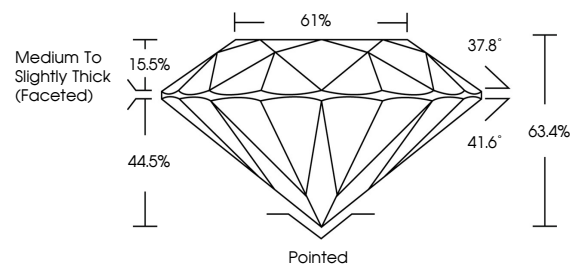
Symmetry **EXCELLENT**

Fluorescence **NONE**

Inscription(s) **LG727510985**

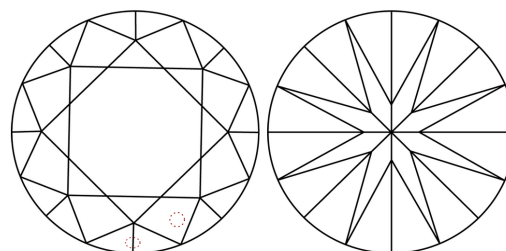
Comments: This Laboratory Grown Diamond was created by Chemical Vapor Deposition (CVD) growth process.
Indications of post-growth treatment.

PROPORTIONS



Sample Image Used

CLARITY CHARACTERISTICS



KEY TO SYMBOLS

Red symbols indicate internal characteristics.
Green symbols indicate external characteristics.

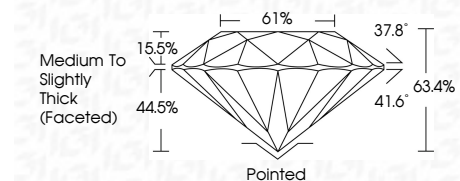
COLOR

D E F G H I J Faint Very Light Light

CLARITY

IF VS¹⁻² VS¹⁻² SI¹⁻² I¹⁻³

Internally Flawless Very Very Slightly Included Very Slightly Included Slightly Included Included



ADDITIONAL GRADING INFORMATION

Polish **VERY GOOD**

Symmetry **EXCELLENT**

Fluorescence **NONE**

Inscription(s) **LG727510985**

Comments: This Laboratory Grown Diamond was created by Chemical Vapor Deposition (CVD) growth process.
Indications of post-growth treatment.



August 20, 2025
IGI Report No LG727510985
ROUND BRILLIANT
7.57 - 7.63 X 4.82 MM
1.73 CARAT
FANCY VIVID BLUE
VS 2
VERY GOOD
63.4%
61%
Medium To Slightly Thick (Faceted)
Pointed
VERY GOOD
EXCELLENT
NONE
IGI LG727510985
Comments: This Laboratory Grown Diamond was created by Chemical Vapor Deposition (CVD) growth process.
Indications of post-growth treatment.